



**上海富士电梯**  
**SHANGHAI FUJI ELEVATOR**



**自动扶梯&自动人行道系列**

**Escalator & Moving Walkway Series**

上海富士电梯有限公司  
SHANGHAI FUJI ELEVATOR CO., LTD.



# 上海富士电梯自动扶梯&自动人行道

## SHANGHAI FUJI ELEVATOR Escalator & Moving Walkway Series

安全可靠 高效节能 美观典雅  
人性体贴 平稳舒适 坚固耐用

Safe and reliable Highly-efficient and energy saving  
Beautiful and elegant Humanized and considerate  
Smooth and comfortable Sturdy and durable

每一天我们都在不断尝试  
在性能之上探索卓越的极限  
传承，是匠人、匠心、匠品的延续  
突破，只为创造更优雅、安心的生活  
上海富士电梯自动扶梯&自动人行道，匠诚之心  
铸就这个时代内富外士、至臻至美的最高标准

We are constantly trying every day  
Explore outstanding limit based on excellent performance  
Inheritance is the continuation of craftsman, Breakthrough,  
only to create a more elegant, secure life  
SHANGHAI FUJI ELEVATOR Escalator & Moving Walkway  
Series achieves craftsmanship  
Sets the highest standard of beauty in this era



# 目录

## Contents

功能特点 Function Characteristics	P01
标准配置 Standard Configuration	P07
可选配置 Optional Configuration	P09
安全装置 Safety Devices	P11
土建布置图 Civil Construction Plans	P13
布置方案 Construction Plan	P19
规格表 Specification Table	P20
功能配置表 List of Configuration Specifition	P21
建筑与工程 Civic Construction Requirement	P23
关于我们 About Us	P25
以客户为尊 Put Clients First	P27







# 至臻品质 完美传承

## Complete Quality, Perfect Inherit

上海富士电梯FEC系列自动扶梯/FRG系列自动人行道以GB标准、EN115标准及世界各国严苛标准为设计基准，并遵循人性化为先的精益生产和制造理念，采用先进的微电脑控制系统和新型材料，深度满足了扶梯的安全、美学及性能等各个方面的客户需求，给使用者带来舒适、平稳、安全、放心的乘梯感受。

上海富士电梯自动扶梯&自动人行道，精雕细琢，完善每个细节，出色可靠的品质能够满足于各种环境需求，广泛适用于商业广场、酒店、地铁、车站、机场、天桥及商务大楼等公共场所。

SHANGHAI FUJI ELEVATOR FEC / FRG series with GB standard, EN115 standard and standard all over the world as standard and follows up to humanistic production and manufacturing idea; it adopts advanced micro computer control system and novel materials with future consideration on clients' demands in aspects like safety, aesthetics and performance of escalator, bringing about comfortable, stable and safe experience for users.

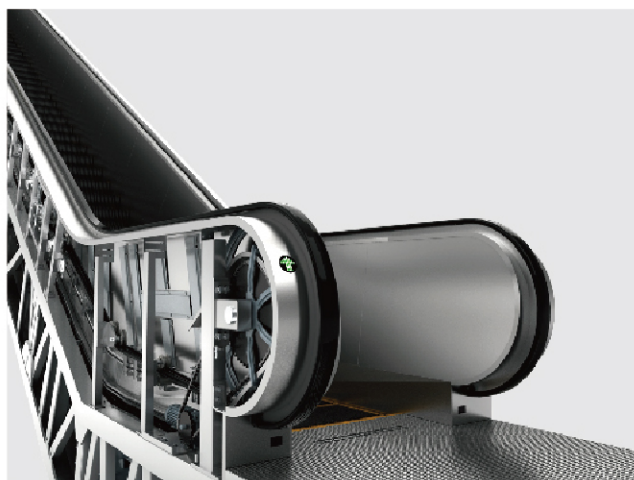
SHANGHAI FUJI ELEVATOR escalator&moving walkway has exquisite manufacturing and perfect details; outstanding quality can satisfy demands of different environments, which is widely applied in public places like shopping mall, subway, station, airport, overpass, and business building and so on.



M型 (苗条型)  
M-type (slim)



L型 (普通型)  
L-type (ordinary)



G型 (公共交通型)  
G-type (public transit)

功能特点

标准配置

可选配置

安全装置

土建布置图

布置方案

规格表

功能配置表

建筑与工程

关于我们

以客户为尊

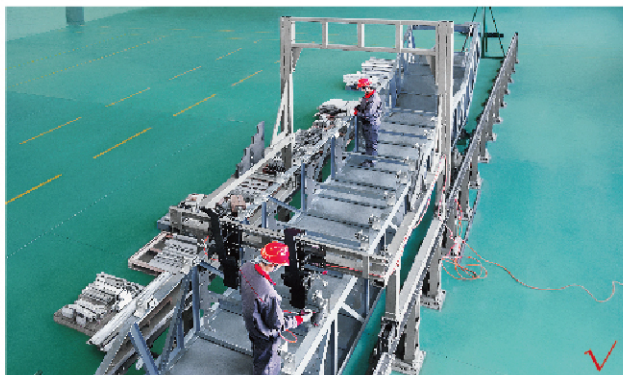


# 精益制造 坚固耐用

## Lean Manufacturing, Robust and Durable

上海富士电梯将追求极致、精益求精的上海工业精神注入自动扶梯、自动人行道，必须经过上海富士电梯严苛质检标准才可入厂的严苛材料选择和严谨、细致的智能制作工序，让严苛品质与优化设计无缝融合，使每件产品精细而卓越，完全值得用户信赖。

SHANGHAI FUJI ELEVATOR manufactures escalators and moving walkways with a spirit of pursuing perfection. SHANGHAI FUJI ELEVATOR adopts strict material selection and production processes, realizes perfect integration of quality and design and makes every product more excellent, Fully worthy of user trust.



大型定位龙门工装  
Large positioning gantry tooling

### 先进智能的生产工艺

Advanced intelligent production process

整个生产过程采用先进的智能化龙门工装生产装配线，保证产品工艺精准、品质稳定，以严谨的制程和产线管理，进一步提升自动扶梯、自动人行道的安全性能。

Over production process adopts advanced production line, applies large scaled positioning dragon gate to guarantee precise production technology, and stable quality, further improve the safety performance of escalators and sidewalks.

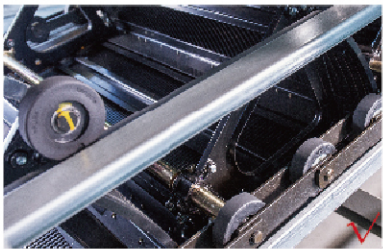
### 超高性能的重要部件

Important parts with high level performance

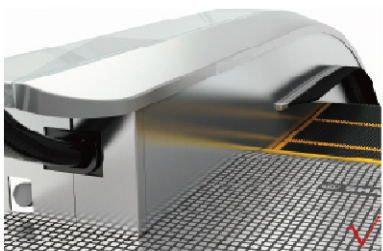
采用大直径的聚氨酯主副轮，保证运行更平稳，噪音更低，使用寿命更长。围裙板及内外盖板均采用高强度不锈钢材质，坚固耐用，更显豪华气派。

Adopt polyurethane made accessory ring with large diameter, guaranteeing more stable operation, lower noise and longer service life.

Skirt guard panel and internal and external cover plate adopt stainless steel material with high strength, which is sturdy and durable, at the meantime seemingly luxurious and glorious.



大直径的主副轮  
Main and Auxiliary Wheels  
with a Larger Diameter



围裙板及内外盖板  
Skirt Panel of and Interior  
and Exterior Cover Plates

### 坚固耐用的构架主体

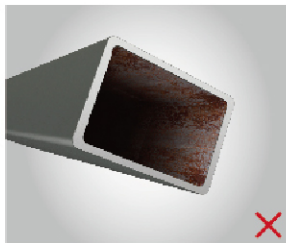
Rugged frame body

桁架坚持采用防锈性好、坚固耐用、性能更佳、成本更高的角钢桁架，适用于各类严苛环境。

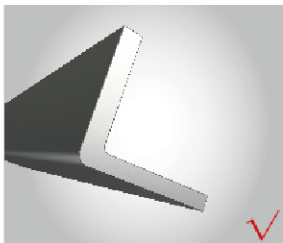
角钢表面防锈处理容易进行，而矩形钢管内腔防锈处理困难，一般不进行除锈和防锈处理。同样截面情况下矩形钢管表面面积大，防锈量大，而且矩形钢管材料壁薄，防锈后对桁架强度、刚度影响大。同样截面情况下，角钢型材桁架的挠度小于矩形钢管型材，不易变形。

The truss material shall consistently use angle steel on which is easier to carry out surface anti-rust solutions;

While the internal side of rectangle steel is difficult for anti-rust solutions, and generally not carry out these solutions. With the same section area, the surface area of rectangle steel is larger, and thus the amount need anti-rust solution is also larger. And the rectangle steel material is thinner, and it has great influence to the trunk rig idity and strength after the antirust treatment. With the same section area, the deflection of the truss material using angle steel is smaller than that of the material using rectangle steel, and it tends not to be distorted.



矩形钢  
Rectangular steel



角钢  
Angle steel

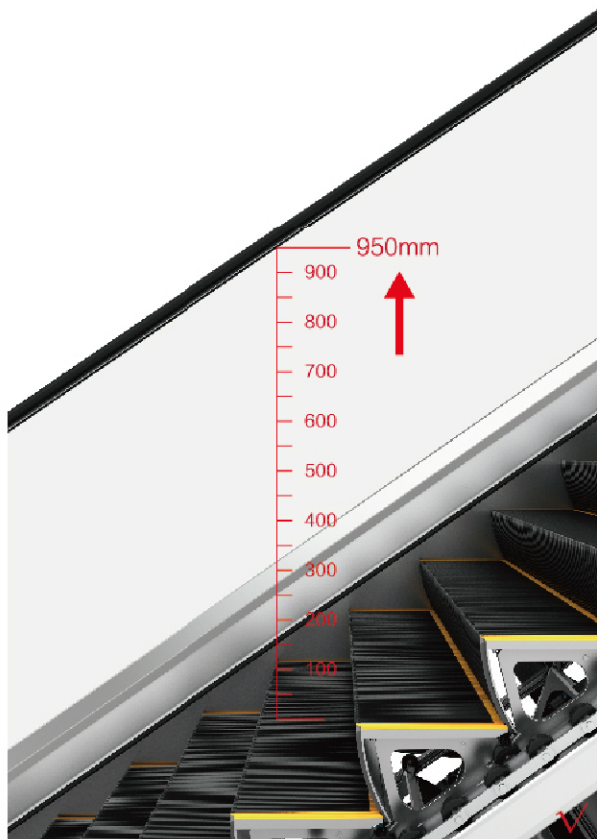


# 优化设计 安全可靠

## Optimized Design, Safe and Reliable

经得起时间考验的安全才是传承级品质的电梯。上海富士电梯每一个细小的改变都是对乘客大大的责任。从你踏上上海富士电梯自动扶梯&自动人行道的那刻，安全、舒适、踏实，一路与您相伴。

Safety withstanding experience of time will be elevator quality for inheritance. Each detailed change in SHANGHAI FUJI ELEVATOR is responsibility as to passenger. As soon as you step on escalators and moving walkways of SHANGHAI FUJI ELEVATOR, accompany you all the way.



### 高安全标准扶手 High safety standard armrest

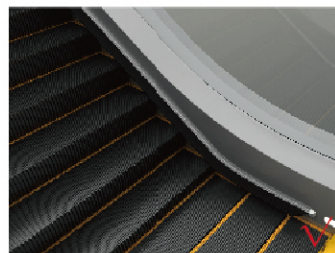
标准配置的扶手栏杆与传统型相比加高了50mm，达到950mm，更加安全、安心；创新型设计的空间曲面新型扶手入口，外观圆润饱满，更贴合人体工程曲线。

Hand rail with standard configuration with increase in height by 50mm compared with traditional type, reaching 950mm, which is safe and relieved. Innovatively designed novel handrail entrance with space curved face; the appearance is mellow and full appropriate for ergonomic engineering curve.

### 可视化警示部件 Visual warning component

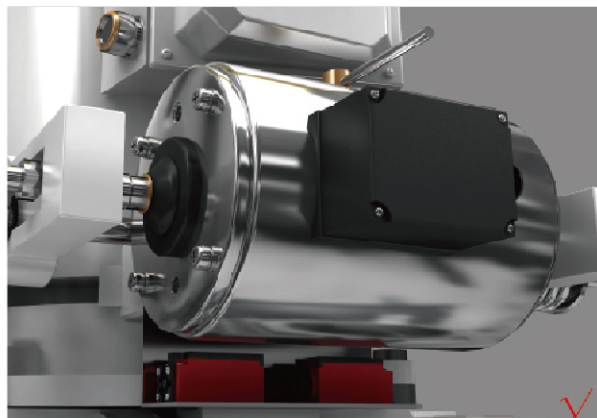
可选的交通信号灯、围裙板照明、黄色梳齿、梯级分界线等均可提供鲜明醒目的可视化部件，起到有效警示的作用，引导乘客安全乘梯。

Traffic light, skirt guard panel illumination, yellow broach, stair boundary and so on provide visualized parts, taking the effect of alarming, guiding passengers in safe ride.



### 安全可靠的中间抱闸制动器 Reliable Band-type brake in the middle

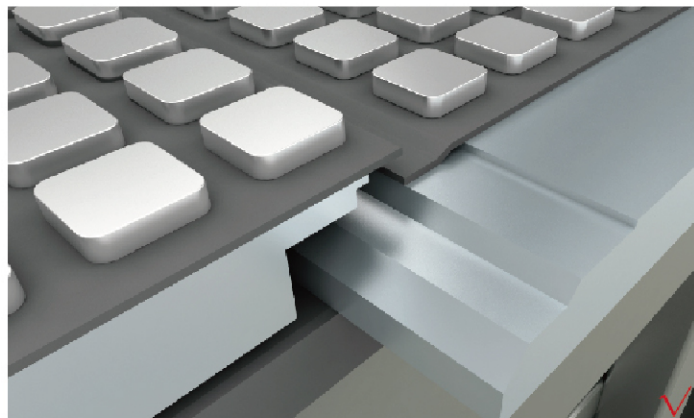
主机采用可靠的中间抱闸制动器，制动效果好，极大提高安全性。  
The main machine adopts band-type brake in the middle achieving excellent braking effect, improving safety.



### 双重搭接高安全性楼层板 High security Floor plate with duel lap joint

特别采用具有安全冗余的双重搭接楼层板，两侧妥贴地放置于高强度床边框上，搭接牢固紧密，有效防止楼层板翻转或塌陷，以源头性安全冗余设计保障乘用更加安全可靠，免除安全之忧。

In particular, double lap floor panels with safety redundancy are used. The two sides are placed on the high-strength bed frame firmly and tightly to prevent the turning or collapse, which makes the passenger safer and more reliable, and avoids the worry of safety.



功能特点

标准配置

可选配置

安全装置

土建布置图

布置方案

规格表

功能配置表

建筑与工程

关于我们

以客户为尊

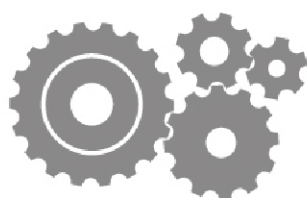


# 精准控制 舒适高效

## Intelligent And Highly-efficient

上海富士电梯始终关注绿色节能领域，打破常规设计，以高效节能的驱动系统、可选的节能控制系统、绿色环保的LDE照明和自动运转节能控制等先进技术，打造节能全新表现，带来自动扶梯&自动人行道的绿色生活革命。

SHANGHAI FUJI ELEVATOR always focus on green energy conservation field, breaks through common design, creates brand new performance of energy conservation, you're embracing the green life revolution of escalators and moving walkways.

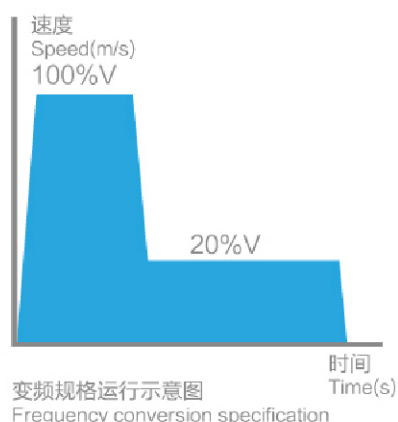


### 高效的驱动系统(标准规格)

Highly efficient drive system(Standard)

与传统驱动系统相比，上海富士电梯采用全新设计的高效节能新型驱动系统，振动低、噪音小、效率高，效率可提高23%。

Compared with traditional ceaseless system, SHANGHAI FUJI ELEVATOR adopts a newly designed high-efficiency and energy-saving new drive system with low vibration, low noise and high efficiency, improving efficiency by 23%.



效率提高  
Improve efficiency

23%

### 智能旁路变频技术(可选规格)

Intelligent bypass frequency conversion technology (optional)

扶梯以Y-△方式启动，在设定时间内检知无人乘坐时，以Y形连接方式切换至节能待机模式；当微波漫反射装置检知有人进入时，控制系统自动感应并切换到△连接方式加速到额定速度状态运行，以提供足够的输出扭矩使系统正常工作。

该节省能源系统可节省电力约30%，同时可以提高设备的运行寿命，降低运行成本，即使在节省能源系统发生故障时，扶梯仍能以Y-△方式正常运行。



节省电力  
Save electric

30%

Escalator starts with Y-△ and operates in Y collection to save energy when inspecting empty load within setting time; when microwave diffuse reflection device examines that there is passenger, control system makes auto-induction and switches to Y-△ mode for operation to provide sufficient output torque, realizing normal work of system;

The energy system can save electric power by 30%, at the meantime improve service life of equipment, reduce operation cost. Even when there is malfunction arising in energy system, escalator can operate normally in the way of Y-△.

# 节能环保 绿色低碳

## Energy Saving And Environmen-Friendly

### 带有集油槽的主导轨(可选规格)

Has main rail of oil trap (optional)

可选的两侧导向、带有集油槽的3mm厚度的主导轨系统，  
在实现梯级的高精密密度横向定位的同时，防止油脂的渗漏。  
The optional main rail system with guide in sides, oil trap and  
thickness being 3mm, which prevents leakage of grease at the  
meantime when realizing highly precise horizontal positioning.



### 绿色环保的LED照明(可选规格)

Green LED lighting (optional)

可选用多种绿色环保的LED照明方案，与传统照明相比，  
可节能多达80%，使用寿命提升100%。  
The optional multiple kinds of LED illumination plans, compared  
with traditional illumination, saving energy by 80%, improving  
service life by 100%.



功能特点

标准配置

可选配置

安全装置

土建布置图

布置方案

规格表

功能配置表

建筑与工程

关于我们

以客户为尊



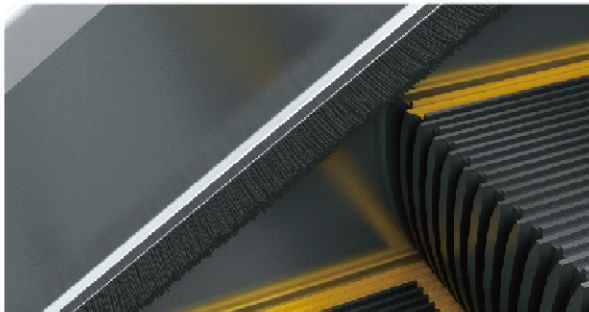
# 标准配置

## Standard Configuration

### 防夹装置(自动扶梯) Anti-pinch device (for escalator)

安装于围裙板两侧、位于梯级上面的防夹装置，可避免乘客的鞋子、衣物等直接碰擦围裙板，能安全有效地防止异物被带入梯级引发危险。

Be installed in both sides of skirt guard board, the anti-pinch device installed in stairs to avoid touch of shoes of passengers with skirt guard board, preventing effectively pinch of foreign matters into stairs.



### 流线型扶手入口 Streamlined handrail entrance

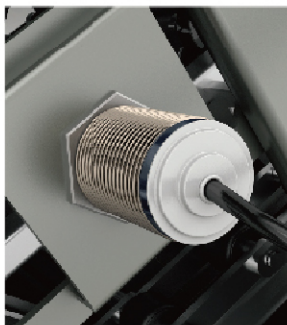
新颖、别致、优雅、富有张力并具现代化流线型扶手带出入口设计，赋予自动扶梯&自动人行道以灵活性和亲和力，更具美观，彰显出与之相配套建筑物的尊贵与气派。

The escalator&moving walkway is designed with novel elegant style , which displays the nobleness and imposing manner of the conveying constructions.

### 梯级、踏板缺失保护装置 Protection device for step & pedal deficiency

在自动扶梯梯级回转处和自动人行道踏板回转处装设的高灵敏度传感器，当有梯级或踏板缺失时，自动扶梯或自动人行道将停止运行。

Sensor is installed in rotation of stairs of escalator&moving walkway; when there is deficiency of stairs or pedal, the escalator or moving walkway will stop immediately.



梯级缺失保护装置  
Protection device for step deficiency



踏板缺失保护装置  
Protection device for pedal deficiency



### 高效节能立式曳引机 Energy efficient vertical traction machine

具有平滑啮合和摩擦减少的特点，确保特别低的噪音（能减少噪音60%以上），与传统的蜗轮蜗杆主机驱动相比，具有更大的驱动效率、更低的能源消耗（节能20%以上）。

The smooth engagement and the frictional reduction guarantees the extremely low noise. It can reduce more than 60% of the noise. Compared with the traditional worm wheel drive, it is of higher driving efficiency, Lower energy consumption (more than 20% energy saving).



# 标准配置

## Standard Configuration

### 扶手带

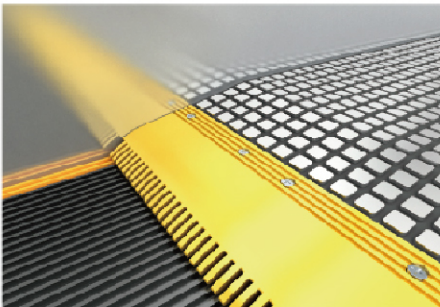
Handrail



黑色  
Black

### 梳齿

Comb teeth



黄色树脂  
Yellow resin

### 梯级

Step



黑色不锈钢（室内梯标配）  
Black stainless steel (Standard for indoor escalator)



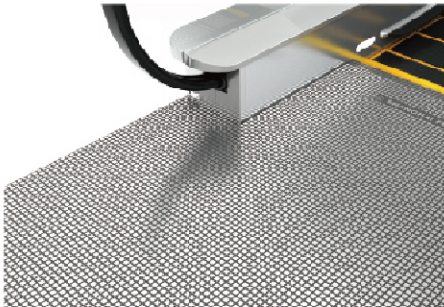
银灰色铝合金（室外梯及人行道标配）  
Silver grey aluminum alloy  
(Standard for outdoor escalator & moving walkway)

注：所有参数、选项和色彩可能会有所调整，本样册所有展示的部件及选项配置仅供参考，印刷品与实物的色彩可能会有偏差，以实物为准。

Note: There may be adjustment made in all parameter, option and color; all parts and optional configuration in the sample book is only for reference, with possible deviationn color and material with material object, Subject to the actual product.

### 前沿板、楼层板

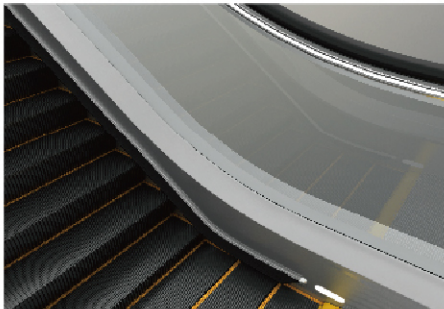
Leading edge board, floor plate



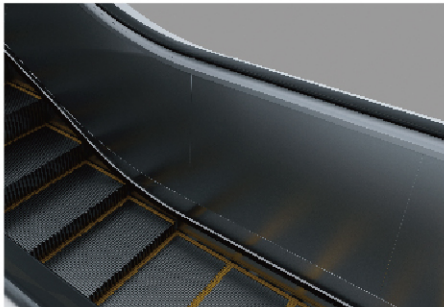
不锈钢  
Stainless steel

### 护壁板

Balustrade panel



无色安全玻璃（直扶手标配）  
Safety glass colorless  
(Standard for vertical handrail)



不锈钢（斜扶手标配）  
Stainless steel  
(Standard for oblique inclined handrail)

功能特点

标准配置

可选配置

安全装置

土建布置图

布置方案

规格表

功能配置表

建筑与工程

关于我们

以客户为尊



# 可选配置

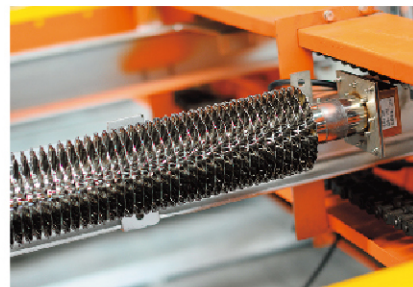
## Optional Configuration

### 加热装置 (适用于室外型自动扶梯)

Heating device (applicable to outdoor escalator)

当在室外极端低温情况下使用自动扶梯时，在上部机房、中部梯路、下部机房可选择安装智能加热装置，加热系统通过温度自动控制系统全权智能管理梯路、梳齿板和机房加热，无需人为干预，运行高效节能。

Use escalator under circumstance with extremely low temperature outdoor; install heating device in upper, middle and bottom machine room, the heating is unified through the temperature automatic control system to fully manage the ladder, the comb plate and the machine room are heated, without human intervention, and the operation is energy efficient.

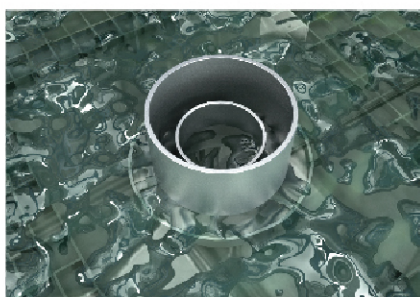


### 油水分离器 (适用于室外型自动扶梯)

Oil water separator (Applicable to outdoor escalator)

将自动扶梯的油水进行分离，雨水通过油水分离器过滤后排出，油污进行定期清理，主要起到环保作用。

Separate oil and water of escalator; rain water is discharged after filtering through oil-water separator; make regular clearing about oil contamination, taking the effect of environmental protection.

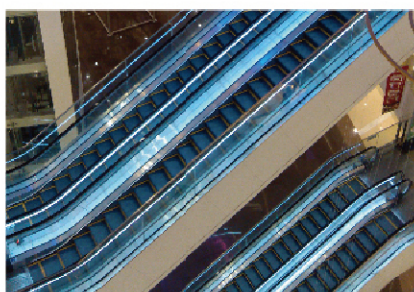


### 梯级警界灯

Step alarm light

醒目的绿色LED灯安装在上、下入口部梯级、踏板下，当自动扶梯、自动人行道运行时，绿色荧光便从梯级、踏板的缝隙中照出，以帮助乘客识别位置，提高乘梯安全。

Green LED is installed in upper and bottom entrances stairs; when the Escalator & Moving Walkway is in operation, green fluorescence emits from tooth of steps to help passengers identify and improve safety of ride.



### LED扶手照明

LED lighting for handrails

采用安全电压供电的LED灯条，安装在扶手带下方，寿命长、亮度高、色度正、更节能，不仅增加扶梯美观，更提高乘降安全性。

LED lamp strips powered by safe voltages are arranged under the handrails. It has the characteristics of longer service life, higher brightness, more energy-saving and standard, not only increase the aesthetic of the escalator, but also improve the safety of ride.

### 自动润滑系统

Automatic lubrication system

智能控制的自动润滑系统，可保证链条滚轮在运行时低噪音、低振动、并延长链条滚轮的使用寿命，同时大大节省维保人工量。

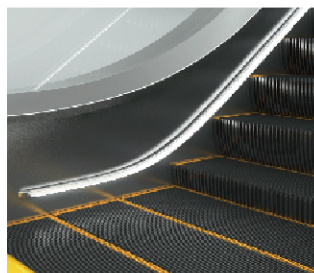
The automatic lubrication system controlled by software can ensure low noise and little vibration of chain rollers when operating as well as extend its service life. Meanwhile, it greatly saves the cost of maintenance labor.



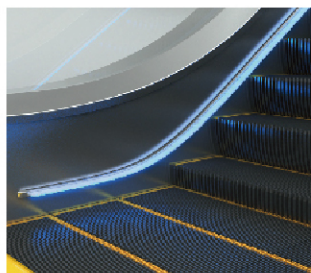


# 可选配置 Optional Configuration

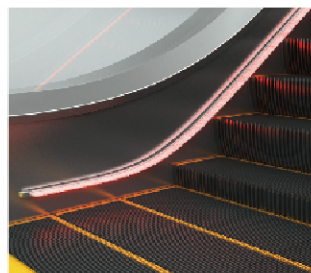
## 围裙照明 Skirting panel lighting



白色  
White

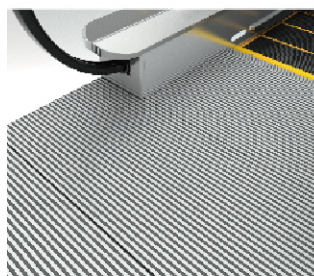


蓝色  
Blue



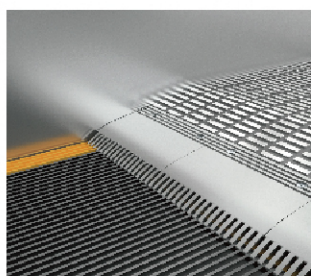
红色  
Red

## 前沿板、楼层板 Leading edge board, floor plate



铝合金  
Aluminum

## 梳齿 Comb teeth

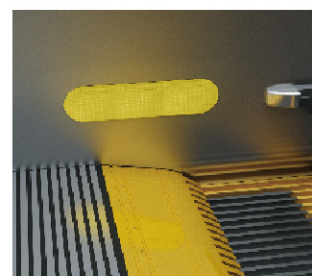


铝合金  
Aluminum

## 梳齿照明 Comb teeth lighting

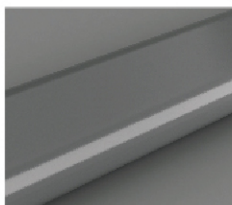


白色LED  
White LED



黄色LED  
Yellow LED

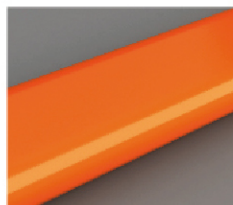
## 扶手带颜色 Handrail color



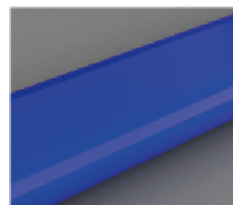
灰色  
Gray  
HR-01



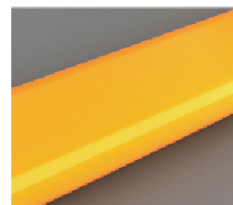
红色  
Red  
HR-02



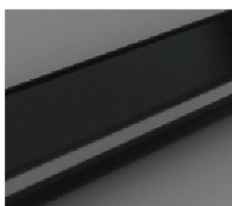
橙色  
Orange  
HR-03



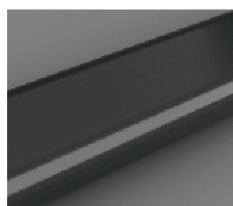
蓝色  
Blue  
HR-04



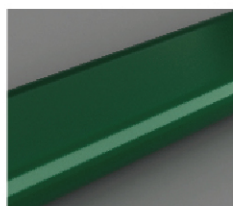
黄色  
Yellow  
HR-05



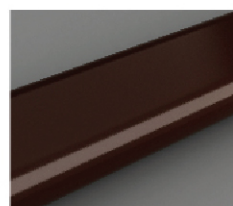
碳黑色  
Carbon black  
HR-06



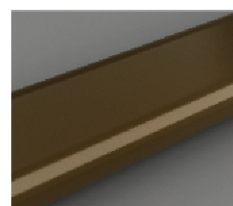
深灰色  
Dark gray  
HR-07



绿色  
Green  
HR-08



棕色  
Brown  
HR-09



褐色  
Brown  
HR-10

功能特点

标准配置

可选配置

安全装置

土建布置图

布置方案

规格表

功能配置表

建筑与工程

关于我们

以客户为尊

# 安全装置

## Safety Devices

上海富士电梯安全装置不仅符合GB16899国家标准，还可提供远高于国家标准的更多安全选项，为您和用户的安全运载提供进一步保障。

Safe device of SHANGHAI FUJI ELEVATOR not only conforms to GB16899 national standard, but also provides further guarantee over more safe options

- 1 错相(断相、反相)保护

2 马达过载保护装置

3 电器回路保护装置

4 扶手带入口保护装置

5 梳齿板安全装置

6 梯级塌陷保护装置

7 梯级缺失检测装置

8 主驱动链断链保护装置

9 梯级链保护安全装置

10 超速保护装置
- 11 非操纵逆转保护装置

12 制动器

13 附加制动器 (H>6000)

14 紧急停止按钮

15 围裙板保护装置

16 梯级静电防护装置

17 制动器释放检测装置

18 机房控制箱停止按钮

19 扶手带速度检测装置

20 防夹装置 (围裙板刷)
- 21 检修楼层盖板打开检测

22 制停距离监测装置

23 扶手带静电防护装置

24 启动蜂鸣器报警

25 水位开关 (室外型)

26 上控制屏故障显示

27 上、下部机房防护罩

28 双排链

29 黄色警戒线标志

30 梯级警界灯
- 31 梳齿照明

32 外置式运行方向指示器

33 扶手防攀爬装置

34 自动加油装置

35 梯级上冲安全保护装置

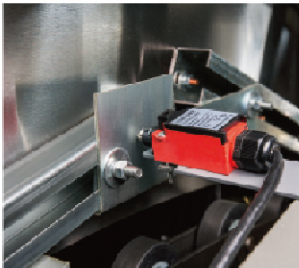
36 扶手带断带保护

37 检修锁
- 标准配置

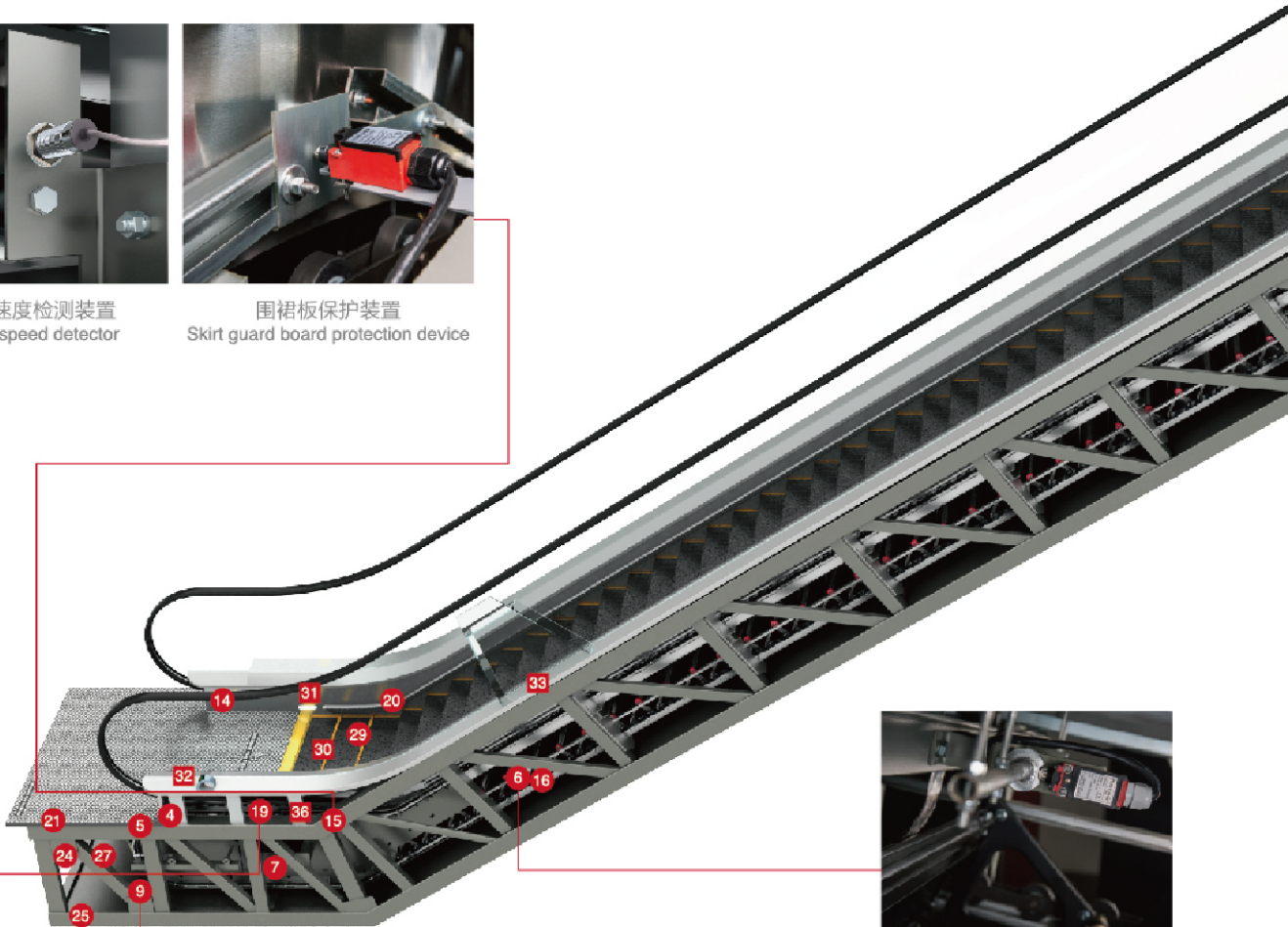
■ 可选配置



扶手带速度检测装置  
Handrail speed detector



围裙板保护装置  
Skirt guard board protection device

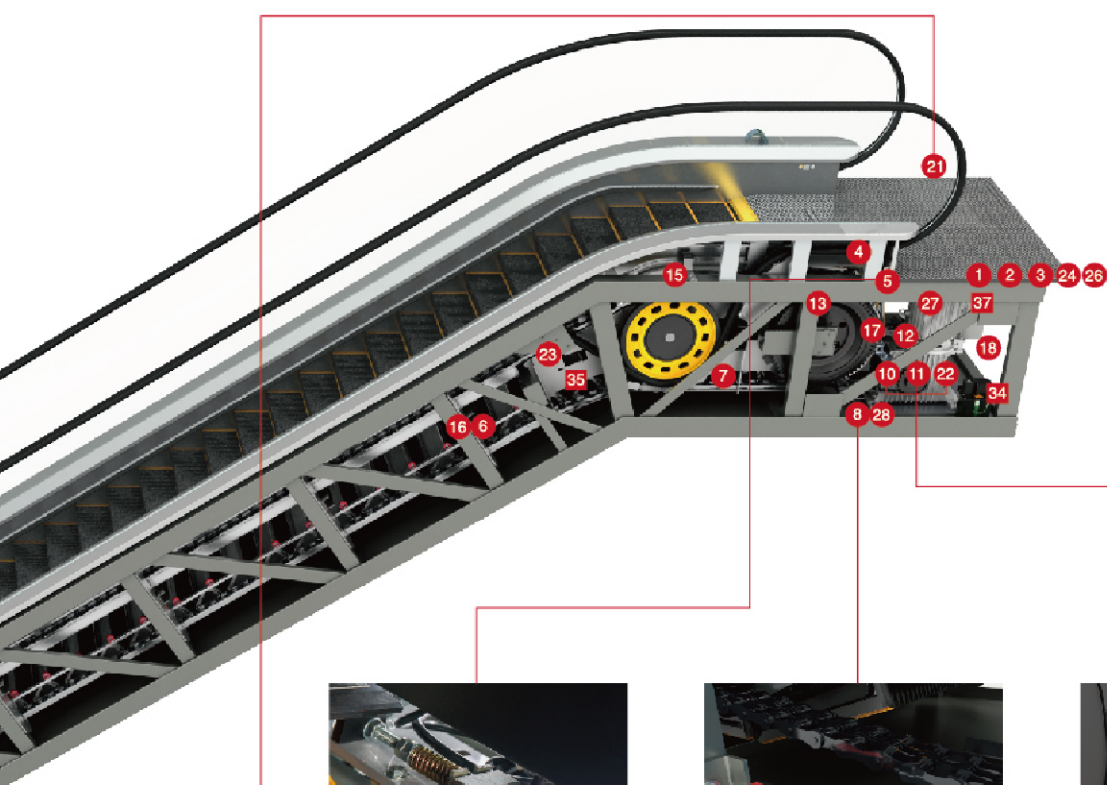


梯级塌陷保护装置  
Protection device for stair collapse



- |  |  |  |  |
|--|--|--|--|
| 1 Phase dislocation (loss of phase, opposition) protection | 11 Protection device for reversal direction      | 21 Open detection when make overhauling over floor plate | 31 Broach illumination                         |
| 2 Motor overload protection device                         | 12 Brake   | 22 Monitoring device over brake distance                 | 32 External operation direction indicator      |
| 3 Electric appliance loop protection device                | 13 Affiliated brake (H > 600)                    | 23 Electrostatic protection device for handrail          | 33 Handrail anti-climbing device               |
| 4 Protection device in entrance of handrail                | 14 Emergency stop button                         | 24 Start buzzer warning                                  | 34 Automatic oiling device                     |
| 5 Safety device for comb plate                             | 15 Skirt guard board protection device           | 25 Water level switch (outdoor type)                     | 35 Uprush safety protective device over stairs |
| 6 Protection device for stair collapse                     | 16 Electrostatic protection device for stairs    | 26 Upper control panel Malfunction display               | 36 Handrail breakage protection                |
| 7 Detector for stair deficiency                            | 17 Detector for brake releasing                  | 27 Machine room shield                                   | 37 Overhaul lock                               |
| 8 Protection device for chain scission of main drive chain | 18 Machine room control cabinet, stopping button | 28 Duplex chain  |  |
| 9 Safety protection device for stairs                      | 19 Handrail speed detector                       | 29 Yellow warning line                                   |  |
| 10 Over speed protection device                            | 20 Anti-pinch device (skirt guard board brush)   | 30 Cascade police light                                  |  |

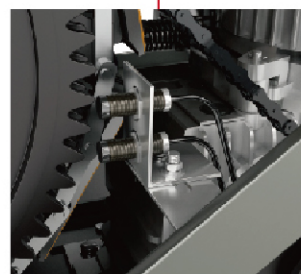
● Standard  
■ Optional



梳齿板安全装置  
Safety device for comb plate



主驱动链断链保护装置  
Protection device for chain scission of main drive chain



非操纵逆转保护装置  
Protection device for reversal direction



检修楼层盖板打开检测  
Open detection when make overhauling over floor plate

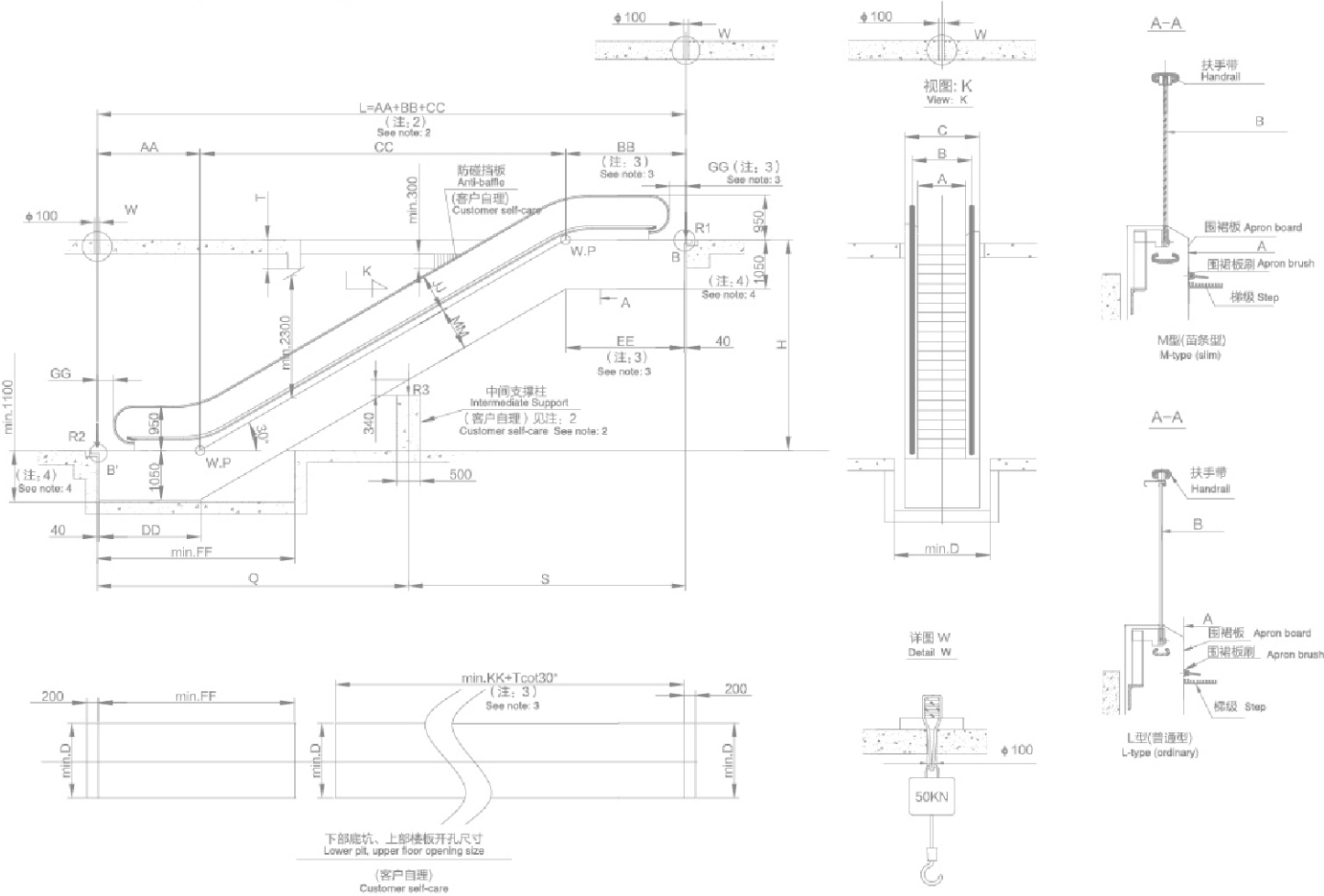


梯级链保护安全装置  
Safety protection device for stairs

土建布置图

FEC自动扶梯 (H≤9500)30° M型(苗条型) & L型(普通型)

Layout drawing for 30° M-type (slim) & L-type(ordinary)  
Escalators (H≤9500)



A	600	800	1000
B	838	1038	1238
C	1150	1350	1550
D	1250	1450	1650
F	15500	15000	15000

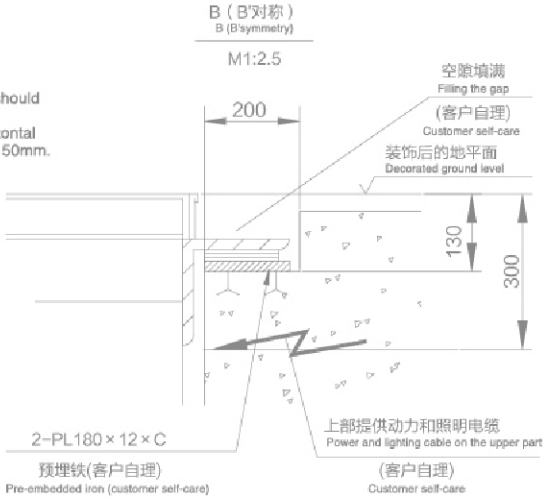
注: 1.自动扶梯符合GB16899标准。  
2.当L>F时, 应设有一个中间支撑。  
3. 如果梯级宽度A=600时, 上部桁架需要加长500mm。  
4. 室外型规格: 桁架上部水平段深度1100mm, 下部底坑深度1150mm。  
Note: 1.The escalator meets the standard of GB16899.  
2.When L>F, an intermediate support should be provided.  
3.If the step width A=600,the depth of the upper horizontal truss should increase by 500mm.  
4.Specifications of the Outdoor Type: the depth of the upper horizontal section of the truss is 1,100mm;the depth of the bottom pit is 1,150mm.

支撑力 (KN) Supporting force

A		R1	R2	R3
1000	L≤F	4.97L+12.92-15.09/L	4.97L+3.55+15.09/L	
	L>F	4.97S+12.92-21.03/S	4.97Q+3.55-5.94/Q	4.97(S+Q)+21.03/S+5.94/Q
800	L≤F	4.31L+12.50-15.02/L	4.31L+3.19+15.02/L	
	L>F	4.31S+12.50-20.35/S	4.31Q+3.19-5.34/Q	4.31(S+Q)+20.35/S+5.34/Q
600	L≤F	3.66L+12.09-14.97/L	3.66L+2.83+14.97/L	
	L>F	3.66S+12.09-19.07/S	3.66Q+2.83-4.74/Q	3.66(S+Q)+19.70/S+4.74/Q

注: 计算公式中L、Q、S单位为: 米。  
Note: The units of L, Q and S in the calculation formula are: meters.

规格 Specifications	AA	BB	CC	DD	EE	FF	GG	JJ	KK	MM	H	水平梯级 Horizontal step
M & L	2197	2568	H x 1.732	2168	2517	4250	505	850	6555	915	H ≤ 6000	2
M & L	2597	2968	H x 1.732	2568	2917	4650	505	850	6955	915	H ≤ 9500	3

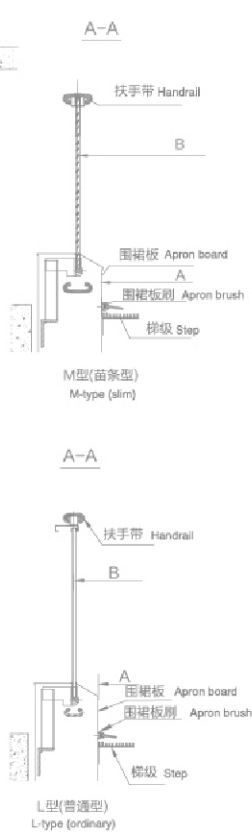
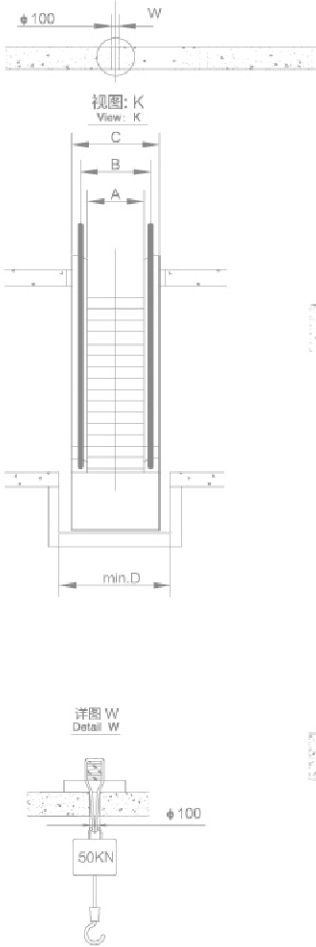
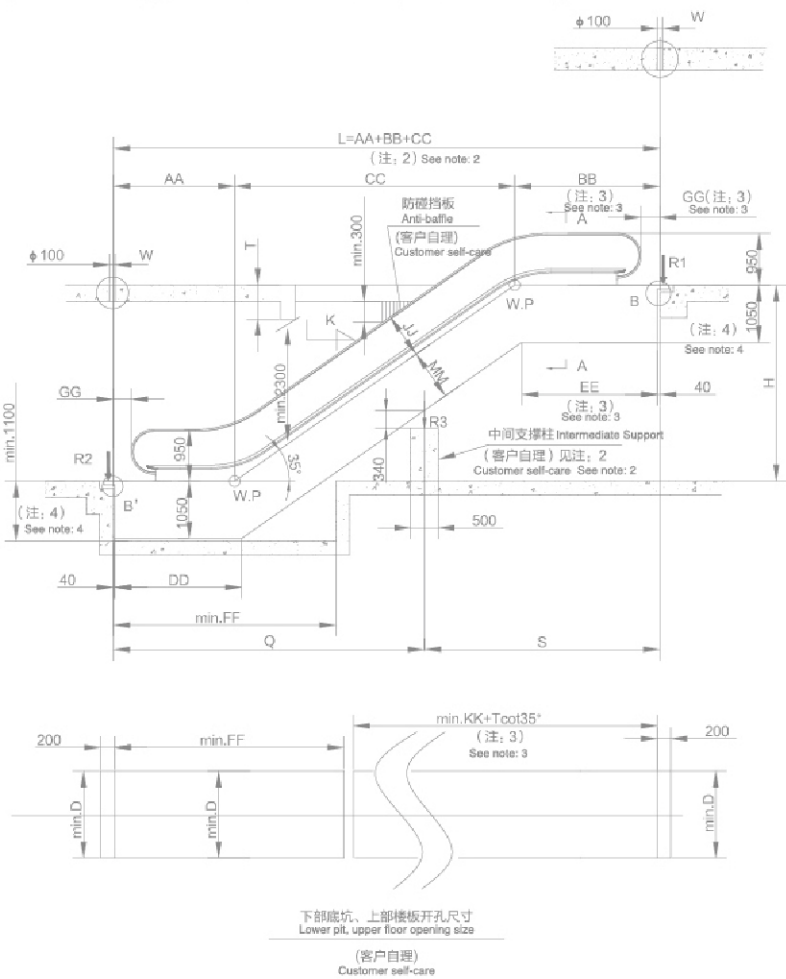




土建布置图

FEC自动扶梯 (H≤6000)35° M型(苗条型) & L型(普通型)

Civil Construction Plans for 35° M-type (slim) & L-type (ordinary) Escalators (H≤6000)



A	600	800	1000
B	838	1038	1238
C	1150	1350	1550
D	1250	1450	1650
F	15500	15000	15000

- 注: 1. 自动扶梯符合GB16899标准。  
2. 当L>F时, 应设有一个中间支撑。  
3. 如果梯级宽度A=600时, 上部桁架需要加长500mm。  
4. 室外型规格: 桁架上部水平段深度1100mm, 下部底坑深度1150mm。

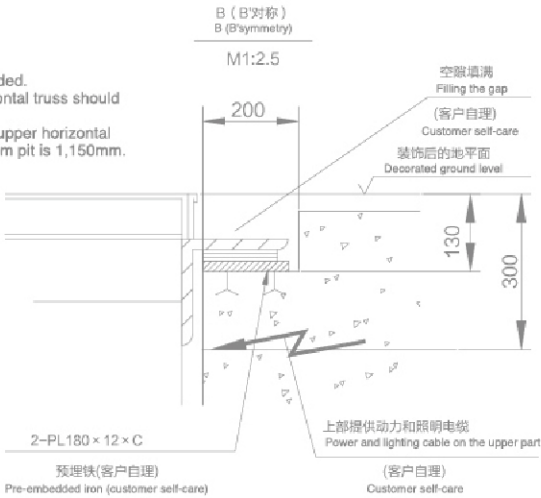
Note: 1.The escalator meets the standard of GB16899.  
2.When L>F, an intermediate support should be provided.  
3.If the step width A=600, the depth of the upper horizontal truss should increase by 500mm.  
4.Specifications of the Outdoor Type: the depth of the upper horizontal section of the truss is 1,100mm;the depth of the bottom pit is 1,150mm.

支撑力 (KN) Supporting force

A		R1	R2	R3
1000	L≤F	5.08L+12.51-15.60/L	5.08L+2.74+15.60/L	
	L>F	5.08S+12.51-20.25/S	5.08Q+2.74-4.65/Q	5.08(S+Q)+20.25/S+4.65/Q
800	L≤F	4.40L+12.15-15.51/L	4.40L+2.47+15.51/L	
	L>F	4.40S+12.15-19.70/S	4.40Q+2.47-4.19/Q	4.40(S+Q)+19.70/S+4.19/Q
600	L≤F	3.75L+11.63-15.60/L	3.75L+2.10+15.29/L	
	L>F	3.75S+11.63-18.85/S	3.75Q+2.10-3.56/Q	3.75(S+Q)+18.85/S+3.56/Q

注: 计算公式中L、Q、S单位为: 米。  
Note: The units of L, Q and S in the calculation formula are: meters.

规格	AA	BB	CC	DD	EE	FF	GG	JJ	KK	MM	H	水平梯级
M & L	2241	2664	H x 1.428	2332	2493	4100	505	830	5950	935	H ≤ 6000	2



功能特点

标准配置

可选配置

安全装置

土建布置图

布置方案

规格表

功能配置表

建筑与工程

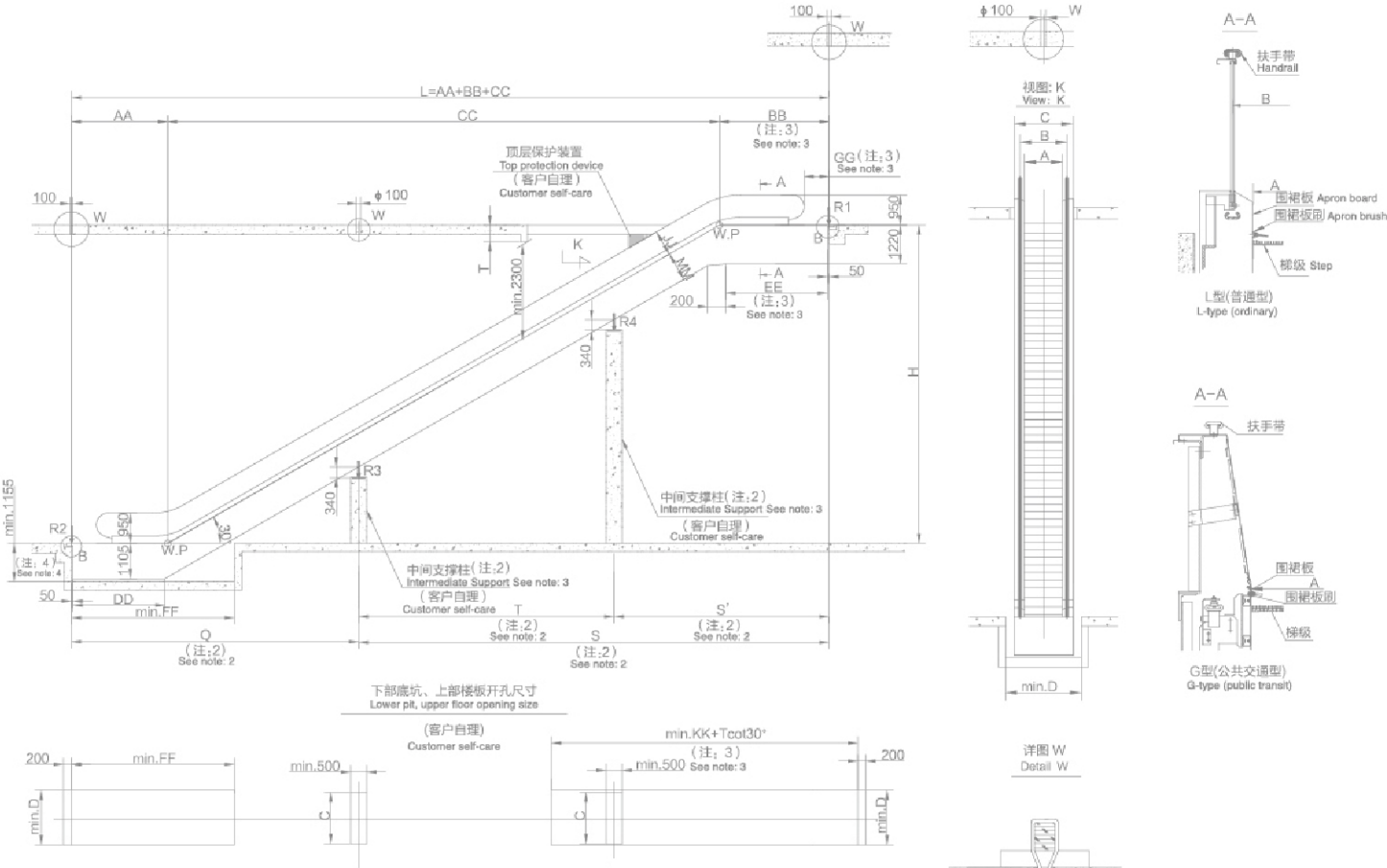
关于我们

以客户为尊

土建布置图

FEC自动扶梯 ( 9500 < H ≤ 14000) 30° L型(普通型) & G型(公共交通型)

Layout drawing for 30° L-type (slim) & G-type (public transit)  
Escalators (9500 < H ≤ 14000)



型号 model	600	800	1000
A	600	800	1000
		H ≤ 12000 H > 12000	
B	838	1038	1080
C	1150	1350	1410
D	1250	1450	1510

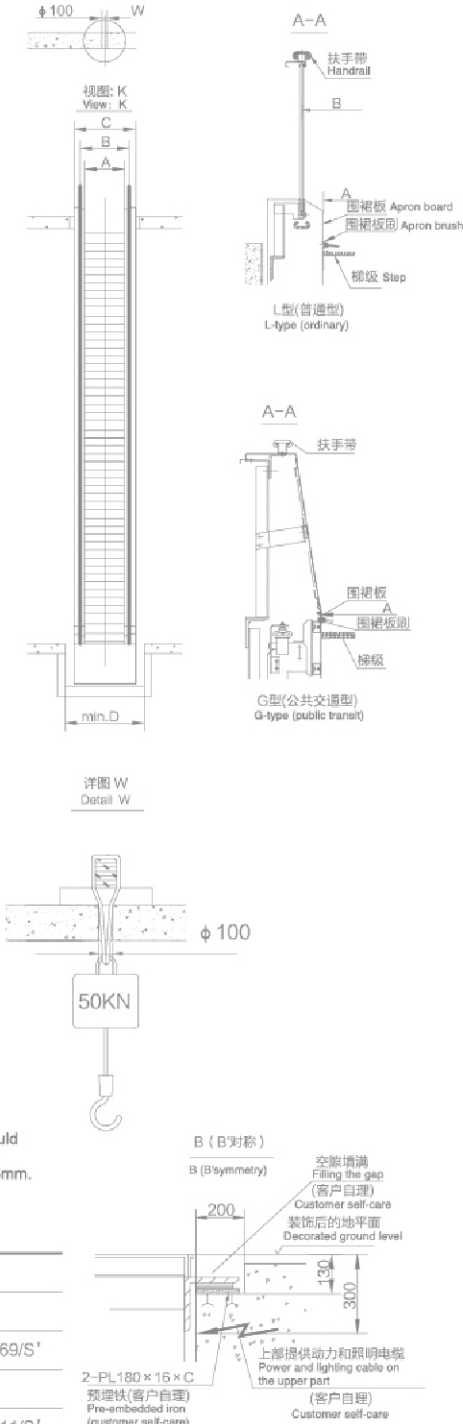
- 注: 1. 自动扶梯符合GB16899标准。  
2. Q、S、T和S' 不可超过11000mm。  
3. 如果梯级宽度A=600时, 上部桁架需要加长500mm。  
4. 室外型规格: 下部底坑深度1205mm。
- Note: 1. The escalator meets the standard of GB16899.  
2. Q, S, T and S' can't exceed 11,000mm.  
3. If the step width A=600, the depth of the upper horizontal truss should increase by 500mm.  
4. Specifications of the Outdoor type: the depth of the bottom pit 1205mm.

支撑力 (KN) Supporting force

A	中间支撑 Intermediate Support	R1	R2	R3	R4
1000	1	5.81S+20.52-32.69/S	5.81Q+7.39-14.63/Q	5.81(S+Q)+32.69/S+14.63/Q	
	2	5.81S' +20.52-32.69/S'	5.81Q+7.39-14.63/Q	5.81(Q+T)+14.63/Q	5.81(S' +T)+32.69/S'
800	1	5.11S+15.22-27.11/S	5.11Q+6.94-13.76/Q	5.11(S+Q)+27.11/S+13.76/Q	
	2	5.11S' +15.22-27.11/S'	5.11Q+6.94-13.76/Q	5.11(Q+T)+13.76/Q	5.11(S' +T)+27.11/S'
600	1	4.42S+15.28-27.87/S	4.42Q+6.50-12.88/Q	4.42(S+Q)+27.87/S+12.88/Q	
	2	4.42S' +15.28-27.87/S'	4.42Q+6.50-12.88/Q	4.42(Q+T)+12.88/Q	4.42(S' +T)+27.87/S'

注: 计算公式中Q、S、T和S' 单位为: 米。  
如果要求桁架有两个以上中间支撑, 请联系我们。  
Note: The units of Q, S, T and S' in the calculation formula are: meters.  
If you require more than two intermediate supports for the trunk, please contact us.

规格	AA	BB	CC	DD	EE	FF	GG	JJ	KK	MM	H	水平梯级
L	3015	3435	H x 1.732	2881	3185	5100	770	850	8100	915	9500 < H ≤ 14000	3
G							837					

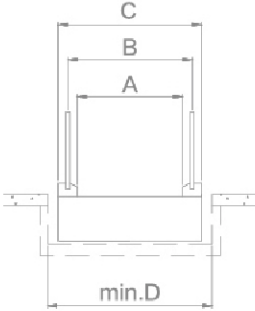
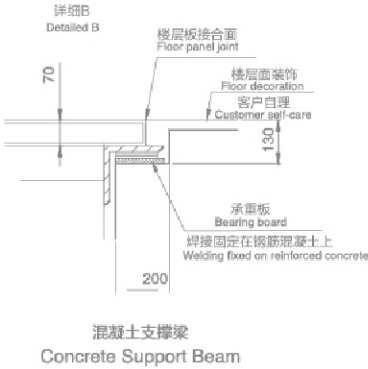
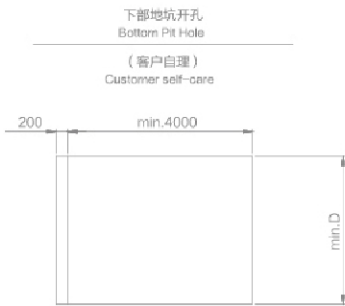
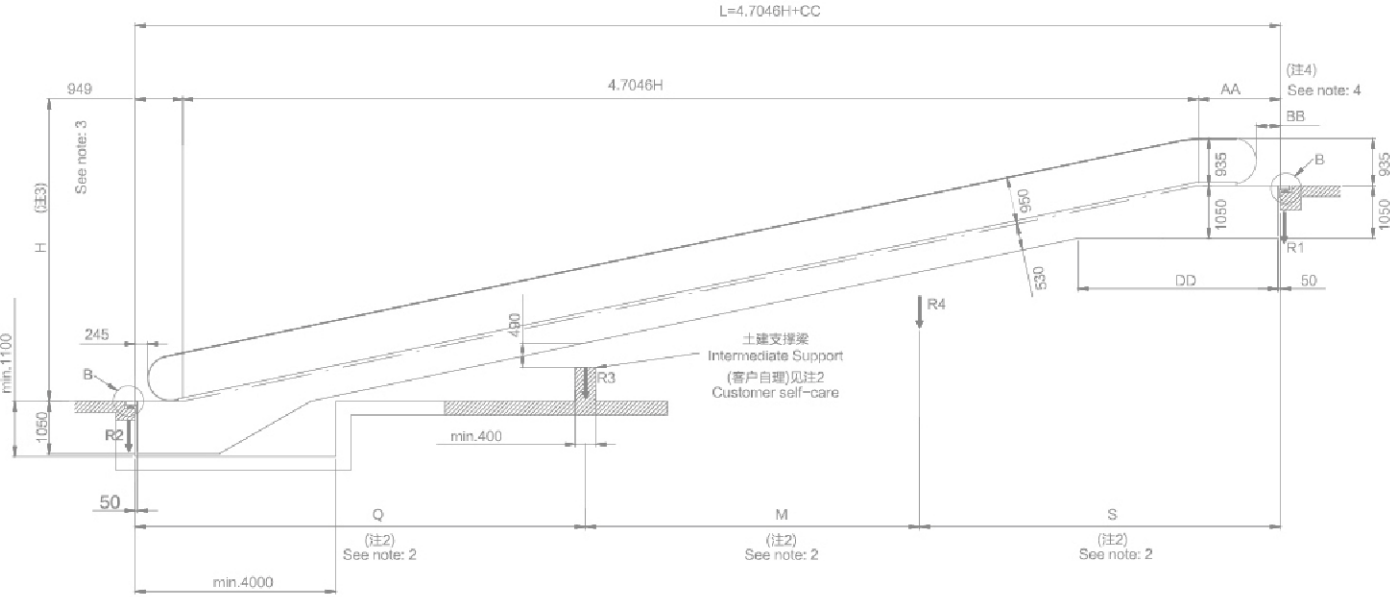




土建布置图

FRG倾斜型自动人行道S800型及S1000型（护壁板：M型、L型、G型）

Civil Construction Plans for S800-type and S1000-type Inclined Moving Walkways (Baseboards: M, L and G Types)



注: 1. 如果L > 13000mm, 应设有一个中间支撑。  
2. S, Q ≤ 13000mm, M ≤ 10000mm。  
3. H的最大尺寸为9000mm。  
4. 选用变频器时, 上部桁架要延长300mm。  
Note: 1. If L > 13000, an intermediate support should be provided.  
2. S, Q, ≤ 13000mm, M ≤ 10000mm.  
3. The maximum size of H is 9,000mm.  
4. When a frequency transformer is used, the length of the upper trunk should increase by 300mm.

规格 Specifications	S800	S1000	AA	BB	CC	DD	H
A	800	1000	1646	492	2595	3825	H ≤ 6.75m
B	1038	1238	1746	592	2695	3925	6.75 < H ≤ 9m
C	1350	1550					
D	1450	1650					

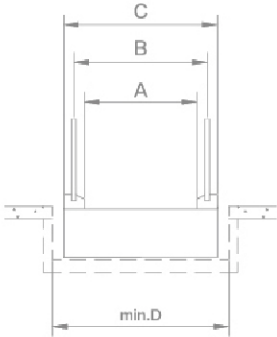
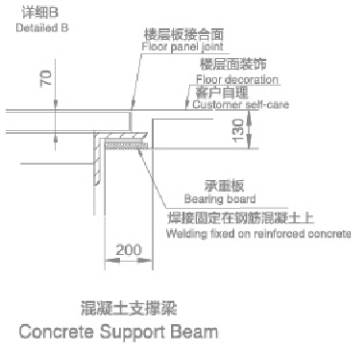
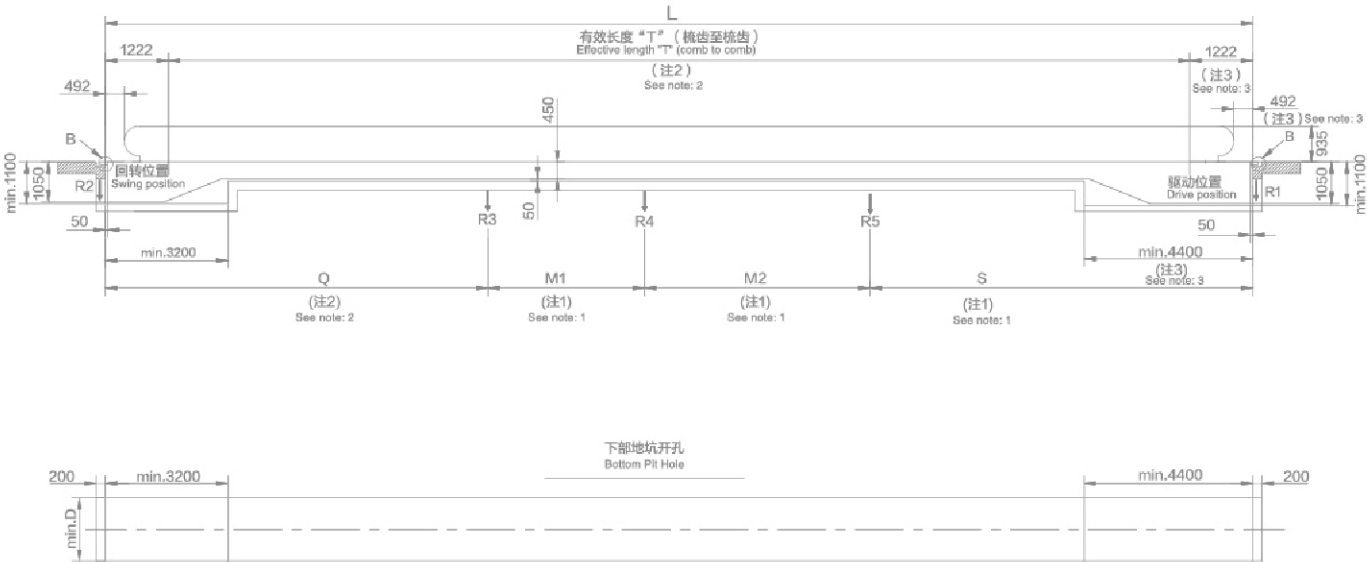
支撑力（KN） Supporting force

规格 Specifications	中间支撑 Intermediate Support	R1	R2	R3	R4
S800	0	4.04L+14.14-14.94/L	4.04L+4.18+14.94/L		
	1	4.04S+14.14-20.08/S	4.04Q+4.18-5.14/Q	4.04(S+Q)+20.08/S+5.14/Q	
	2			4.04(Q+M)+5.14/Q	4.04(S+M)+20.08/S
S1000	0	4.67L+14.59-15.07/L	4.67L+4.60+15.07/L		
	1	4.67S+14.59-20.72/S	4.67S+4.60-5.66/Q	4.67(S+Q)+20.72/S+5.66/Q	
	2			4.67(Q+M)+5.66/Q	4.67(S+M)+20.72/S

# 土建布置图

## FRG水平型自动人行道S1000型（护壁板：M型、L型、G型）

### Layout drawing for S1000-type Horizontal Moving Walkways (Baseboards: M, L and G Types)



规格 Specifications	S1000
A	1000
B	1238
C	1550
D	1650

注：1. Q、S、M1、M2最大尺寸为10m。  
2. T的最大尺寸为30m（M型）；100m（L型、G型）。  
3. 选用变频器时，驱动位置桁架要延长300mm。  
Note: 1.The maximum size of Q, S, M1 and M2 is 10m.  
2.The maximum size of T is 30m (M Type) and 100m (L and G Types).  
3.When a frequency transformer is used, the length of the truss at the drive position should increase by 300mm.

### 支撑力（KN） Supporting force

规格 Specifications	中间支撑 Intermediate Support	R1	R2	R3	R4	R5
S1000	1	4.71S+14.92-22.55/S	4.71Q+6.56-8.56/Q	4.71(S+Q)+22.55/S+8.65/Q	—————	—————
	2			4.71(Q+M1)+8.65/Q	4.71(S+M1)+22.55/S	—————
	3				4.71(M1+M2)	4.71(S+M2)+22.55/S

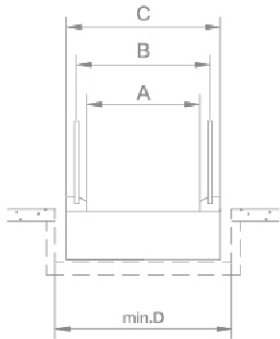
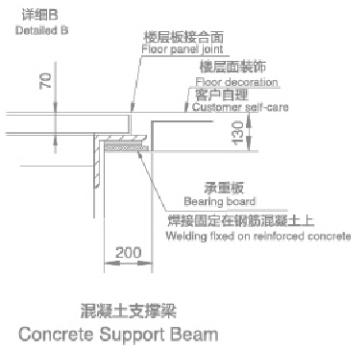
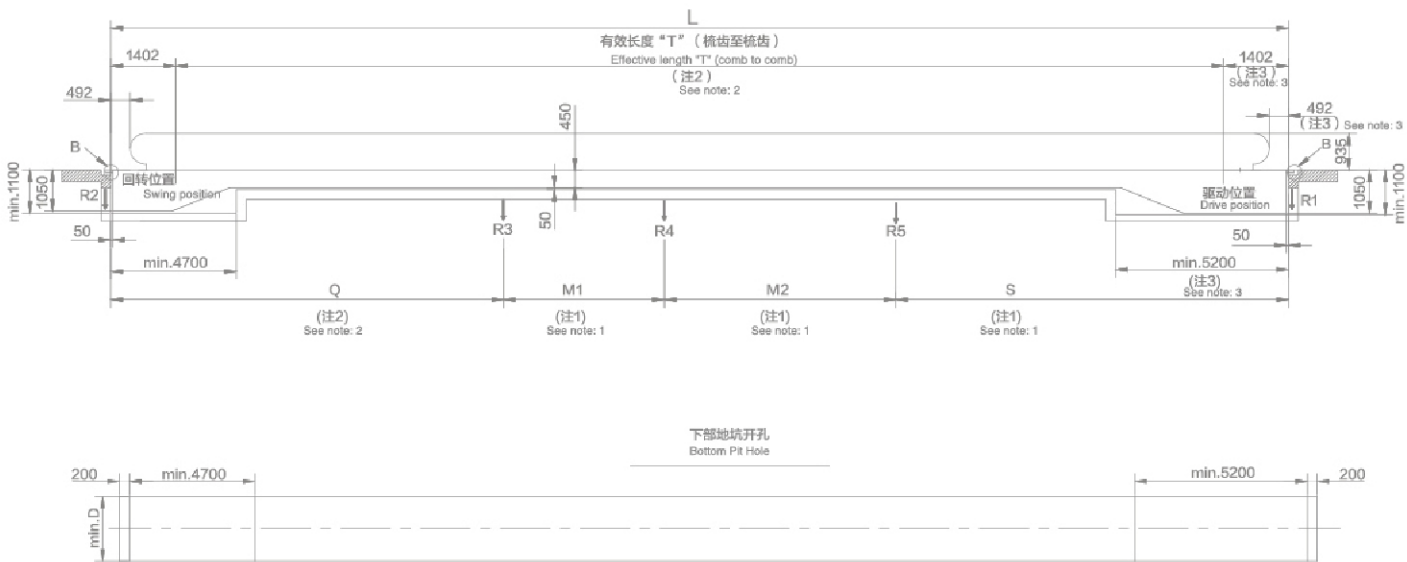
注：Q、S、M1及M2单位为：米。  
Note: The units of Q, S, M1 and M2 are: meters.



土建布置图

FRG水平型自动人行道S1400型（护壁板：M型、L型、G型）

Layout drawing for S1400-type Horizontal Moving Walkways (Baseboards: M, L and G Types)



规格 Specifications	S1400
A	1400
B	1638
C	1950
D	2050

注：1. Q、S、M1、M2最大尺寸为9m。  
2. T的最大尺寸为30m（M型）；100m（L型、G型）。  
3. 选用变频器时，驱动位置桁架要延长300mm。

Note: 1.The maximum size of Q, S, M1 and M2 is 9m.  
2.The maximum size of T is 30m (M Type) and 100m (L and G Types).  
3.When a frequency transformer is used, the length of the truss at the drive position should increase by 300mm.

支撑力（KN） Supporting force

规格 Specifications	中间支撑 Intermediate Support	R1	R2	R3	R4	R5
S1000	1	6.34S+18.47~29.51/S	6.34Q+7.90~14.03/Q	6.34(S+Q)+29.51/S+14.03/Q	——	——
	2			6.34(Q+M1)+14.03/Q	6.34(S+M1)+29.51/S	——
	3				6.34(M1+M2)	6.34(S+M2)+29.51/S

注：Q、S、M1及M2单位为：米。  
Note: The units of Q, S, M1 and M2 are: meters.

功能特点

标准配置

可选配置

安全装置

土建布置图

布置方案

规格表

功能配置表

建筑与工程

关于我们

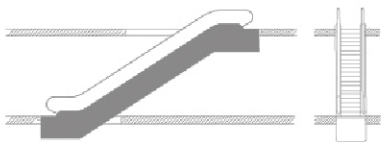
以客户为尊

# 布置方案

## FEC自动扶梯&FRG自动人行道

### Layout Plan For Escalator & Moving Walkway

注：以下以自动扶梯为例作图示说明，自动人行道的布置方案可参照以下方案处理。  
Note: The following is an example of an escalator, The layout of the moving walkway can be handled by referring to the following scheme.

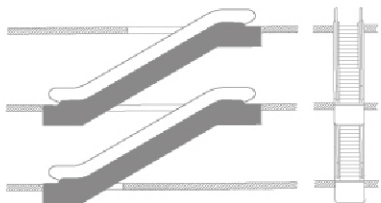
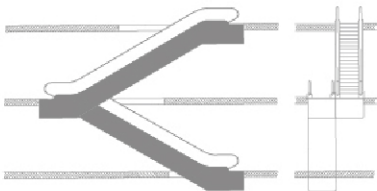


#### 单台扶梯 Single unit

采用单台扶梯连接两个层面。它适合客流量主要朝一个方向流动的大楼。可作灵活的调整以满足乘客流动的需要（例如：早晨上行，晚上下行）。  
The single unit used to link two levels. It is suitable for buildings with passenger traffic flowing mainly in one direction. Flexible adjustment to traffic flow (e.g.: up in the morning and down in the evening) is possible.

#### 连续布置式（单向交通） Continuous arrangement (one-way traffic)

这种布置方式主要用于小型百货商店，以连续三个销售楼层。这种布置比断续布置所需要的空间要多一些。  
This arrangement is used mainly in smaller department stores to link three sales levels. It requires more space than the interrupted arrangement.

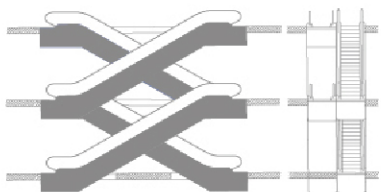
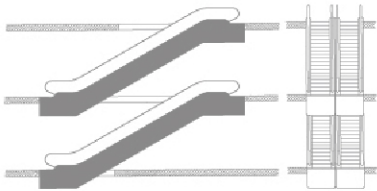


#### 断续布置式（单向交通） Interrupted arrangement (one-way traffic)

这种布置多少会给乘客带来不便，但对商场业主却有利，因为在上行或下行扶梯间以及换乘扶梯间的空间间隔有可能让顾客看到特意布置的广告展品。  
This arrangement is somewhat inconvenient for users, but advantageous for department store owners, since the short detour to the next unit and the spatial separation between up and down travel is ideal for leading customers past strategically placed advertising displays.

#### 平行断续布置式（双向交通） Parallel, interrupted arrangement (two-way traffic)

这种布置方式主要使用于客流量较大的商场和公交设施。当有三台或三台以上自动扶梯时，就应有可能按照客流改变运动方向。这种布置方式比较经济，因为这样无需内侧挡板。  
This arrangement is used mainly in department stores and public transport buildings with a heavy traffic volume. When there are three or more escalators, it should be possible to reverse the traveling direction according to the traffic flow. This arrangement is economical, since no inner lateral claddings are required.



#### 交叉连续布置式（双向交通） Crisscross, continuous arrangement (two-way traffic)

这种布置方式主要使用于大型百货商场、公共建筑和公共交通场所，这些地方的楼层之间的运送次数应保持尽可能地少。  
This arrangement is used mainly in major department stores, public buildings and public transport buildings where transport times between several levels should be kept to a minimum.



规格表

Specification Table

FEC自动扶梯

Escalator

栏杆 Railing			
扶手带 Handrail	合成橡胶（黑色） Synthetic rubber(Black)		S
	合成橡胶/聚氨酯（10种颜色） Synthetic rubber/ Polyurethane (10 Colors)		O
扶手支架 Handrail Support		发纹不锈钢 Hairline Stainless Steel	S
内外盖板（仅M/L型） Interior and Exterior CoverPlates (Only M/L Types)			
护壁板 Balustrade	M、L型：无色透明强化玻璃 M and L Types: Colorless Transparent Tempered Glass		S
	G型：发纹不锈钢 G Type: Hairline Stainless Steel		S
围裙板 Skirt Panel	发纹不锈钢 Hairline Stainless Steel		S
梯级 Railing			
梯级 Railing	室内：不锈钢（黑）附黄色树脂禁界线 Indoor: Stainless Steel (Black) with a Yellow Rubber Demarcation Line		S
	室外：铝合金（灰）附黄色禁界线 Outdoor: Aluminum Alloy (Grey) with a Yellow Demarcation Line		S
	铝合金压铸（灰/黑） Aluminum Alloy Die-casting (Grey/ Black)		O
铝制梯级禁界线 Aluminum Step Demarcation Line	喷漆（黄） Paint (Yellow)		S
	合成树脂（黄） Synthetic Rubber (Yellow)		O
楼层板 Floor Plate			
梳齿 Comb Plate	黄色合成树脂 Yellow Synthetic Rubber		S
	铝合金压铸 Aluminum Alloy Die-casting		O
楼层板 Floor Plate	发纹不锈钢 Hairline Stainless Steel		S
	铝合金 Aluminum Alloy		O
项目 Project	S600	S800	S1000
梯级宽度（mm） Step Width (mm)	600	800	1000
最大提升高度（m） Maximum Lifting Height (m)	30°：12.72		
	35°：M、L、G型（Type）6.0		
倾斜角（度） Angle of Inclination (Degree)	30° /35°		
额定速度（m/s） Rated Speed (m/s)	0.65/0.5		
最大输送能力（人/h） Maximum Transport Capacity (person/hour)	3600	4800	6000
电源 Power Supply	三相五线380V50HZ Three-Phase and Five-Wire 380V50HZ 单相220V50HZ Single Phase 220V50HZ		

注：以上规格以GB16899为基准。  
Note: The above specifications meet the standard of GB16899.

FRG自动人行道

Moving walkway

栏杆 Railing				
扶手带 Handrail	合成橡胶（黑色） Synthetic rubber(Black)			S
	合成橡胶/聚氨酯（10种颜色） Synthetic rubber/ Polyurethane (10 Colors)			O
扶手支架 Handrail Support		发纹不锈钢 Hairline Stainless Steel		S
内外盖板（仅M/L型） Interior and Exterior CoverPlates (Only M/L Types)				
护壁板 Balustrade	M、L型：无色透明强化玻璃 M and L Types: Colorless Transparent Tempered Glass			S
	G型：发纹不锈钢 G Type: Hairline Stainless Steel			S
围裙板 Skirt Panel	发纹不锈钢 Hairline Stainless Steel			S
踏板 Tread				
踏板 Tread	S1000/S800	铝合金整体压铸 Integrated Aluminum Alloy Die-casting		S
	S1400	不锈钢 Stainless Steel		S
		铝合金整体压铸 Integrated Aluminum Alloy Die-casting		O
禁界线 Demarcation Line	喷漆（黄） [适用于S800型和S1000型] Paint (Yellow)			S
	合成树脂（黄） [适用于S1400型] Synthetic Rubber (Yellow) Suitable for S1400型			S
楼层板 Floor Plate				
梳齿 Comb Plate	铝合金压铸 Aluminum Alloy Die-casting			S
楼层板 Floor Plate	发纹不锈钢 Hairline Stainless Steel			S
	铝合金 Aluminum Alloy			O
项目 Project		S800	S1000	S1400
梯级宽度（mm） Step Width (mm)		800	1000	1400
最大长度（m） Maximum Length (m)		100[适用于水平型] 100[Suitable for the horizontal type]		
最大提升高度（m） Maximum Lifting Height (m)		9.0[适用于倾斜型] 9.0[Suitable for the inclined type]		
倾斜角（度） Angle of Inclination (Degree)		12°	0° /12°	0°
额定速度（m/s） Rated Speed (m/s)		0.5		
最大输送能力（人/h） Maximum Transport Capacity (person/hour)		4800	6000	6000
电源 Power Supply		三相五线380V50HZ Three-Phase and Five-Wire 380V50HZ 单相220V50HZ Single Phase 220V50HZ		

注：1. 以上规格以GB16899为基准。  
2. 0° 不适用于S800型。  
Note: 1.The above specifications meet the standard of GB16899.  
2.0° is not suitable for the S800 model.

S 标准规格  
Standard  
O 可选规格  
Optional

功能特点

标准配置

可选配置

安全装置

土建布置图

布置方案

规格表

功能配置表

建筑与工程

关于我们

以客户为尊

# 功能配置表

## List of Configuration Specifition

**S** 标准配置 Standard    **O** 可选配置 Optional    **—** 不提供此项配置 No Provided

NO.	功能 Function	说明 Description	配置 Configuration		
			FEC (自动扶梯) Escalator		FRG (自动人行道) Moving walkway
			室内 Indoor	室外 Outdoor	室内 Indoor
1	错相(断相、反相)保护 Fault phase (disconnection phase, opposite phase) protection	当供电电源错相、欠相或反相时，保护装置能自动检测并切断电路,使自动扶梯、自动人行道停止运行。 When the power supply is out of phase, out phase or out phase, the protection device can automatically detect and cut off the circuit, making FEC and FRG stop running.	<b>S</b>	<b>S</b>	<b>S</b>
2	马达过载保护装置 Motor overload protection	电机装有防止过热、过电流安全装置，当检测异常时，自动扶梯或自动人行道停止运行。 The motor is equipped with safety device to prevent overheating and overcurrent. When abnormal detection is detected, FEC or FRG stop running.	<b>S</b>	<b>S</b>	<b>S</b>
3	电路回路保护装置 Electrical circuit device	提供自动电路断开装置，保护自动扶梯或自动人行道的电路和电源部件。 Provide automatic circuit breaker to protect FEC or FRG circuits and power components.	<b>S</b>	<b>S</b>	<b>S</b>
4	扶手带入口保护装置 Handrail entry protection	在扶手带入口处设有防护装置，当异物卡在保护装置上时，自动扶梯或自动人行道停止运行。 FEC or FRG stop operation when foreign matter gets stuck on the guard at the entrance of the handrail.	<b>S</b>	<b>S</b>	<b>S</b>
5	梳齿板安全装置 Safety device for comb tooth plate	当异物卡入梯级、踏板与梳齿之间时，自动扶梯或自动人行道自动停止运行。 FEC or FRG stop automatically when foreign matter gets stuck between steps, pedals and comb plate.	<b>S</b>	<b>S</b>	<b>S</b>
6	梯级、踏板塌陷保护装置 Step and step collapse protection device	当有梯级或踏板的任何部分下陷导致不再与梳齿啮合时，自动扶梯或自动人行道在塌陷部件到达梳齿相交线前，停止运行。 FEC or FRG stop automatically when foreign matter gets stuck between steps, pedals and comb teeth.	<b>S</b>	<b>S</b>	<b>S</b>
7	梯级、踏板缺失检测装置 Detection device for missing steps and pedals	在回转处装设梯级或踏板运行检测传感器，当检测到梯级或踏板运行缺失时，自动扶梯或自动人行道停止运行。 A step or pedal operation detection sensor is installed at the turning point. When the step or pedal is detected to be missing, FEC or FRG stop running.	<b>S</b>	<b>S</b>	<b>S</b>
8	主驱动链断链保护装置 Main drive chain breaking protection device	当驱动链过度拉伸或断裂时，自动扶梯或自动人行道停止运行。 When the drive chain is overstretched or breaks, FEC or FRG stop running.	<b>S</b>	<b>S</b>	<b>S</b>
9	梯级链保护安全装置 Safety device for cascade chain protection	当梯级链过度拉伸或断裂时，自动扶梯或自动人行道停止运行。 When the cascade chain is overstretched or breaks, FEC or FRG stop running.	<b>S</b>	<b>S</b>	<b>S</b>
10	超速保护装置 Overspeed protection	在自动扶梯或自动人行道速度超过名义速度的1.2倍之前，自动扶梯或自动人行道停止运行。 FEC or FRG stop running before the speed of FEC or FRG exceeds 1.2 times the nominal speed.	<b>S</b>	<b>S</b>	<b>S</b>
11	非操纵逆转保护装置 Non-maneuverable reverse protection	当检测到自动扶梯或自动人行道改变规定的运行方向时，自动扶梯或自动人行道停止运行。 When FEC or FRG is detected to change the specified operating direction, FEC or FRG stops running.	<b>S</b>	<b>S</b>	<b>S</b>
12	制动器 brake	当电力不足或任一安全装置动作时，制动装置将通过弹簧弹力作用使制动功能生效，自动扶梯或自动人行道停止运行。 When the power is insufficient or any safety device is in operation, the brake device will make the brake function effective through spring action, and FEC or FRG will stop running.	<b>S</b>	<b>S</b>	<b>S</b>
13	附加制动器 (H>6000) Additional brakes (H>6000)	当速度超过名义速度1.4倍之前或梯级、踏板改变其规定运行方向时或主驱动链断裂时，装置动作，自动扶梯或自动人行道停止运行。 When the speed exceeds 1.4 times the nominal speed or when the steps and pedals change their specified operating direction or the main drive chain breaks, the device moves and FEC or FRG stops running.	<b>S</b>	<b>S</b>	<b>S</b>
14	紧急停止按钮 Emergency stop button	在上下出入口处设有紧急停止装置，遇到突发事件可以使自动扶梯或自动人行道停止运行。 Emergency stop device is provided at the upper and lower exit entrance, and FEC or FRG can be stopped in case of emergency.	<b>S</b>	<b>S</b>	<b>S</b>
15	围裙板保护装置 Apron plate protector	当异物被夹入梯级、踏板与裙板之间的空隙时，自动扶梯或自动人行道停止运行。 The FEC or FRG stops running when the foreign body is clamped into the gap between the steps, pedals and the skirting board.	<b>S</b>	<b>S</b>	<b>O</b>
16	梯级静电防护装置 Step electrostatic protection device	梯路中装有静电刷，防止静电产生。 The ladder is equipped with a static brush to prevent static electricity generation.	<b>S</b>	<b>S</b>	<b>S</b>
17	制动器释放检测装置 Brake release detection device	检测自动扶梯或自动人行道制动器是否正常工作。 Check whether FEC or FRG brakes are working normally.	<b>S</b>	<b>S</b>	<b>S</b>
18	机房控制箱停止按钮 Machine room control box stop button	在上、下部机房中，当按下紧急停止按钮时，自动扶梯或自动人行道停止运行。 In upper and lower machine rooms, FEC or FRG stop when pressing the emergency stop button.	<b>S</b>	<b>S</b>	<b>S</b>



功能配置表

List of Configuration Specifition

S 标准配置  
Standard

O 可选配置  
Optional

— 不提供此项配置  
No Provided

NO.	功能 Function	说明 Description	配置 Configuration		
			FEC (自动扶梯) Escalator		FRG (自动人行道) Moving walkway
			室内 Indoor	室外 Outdoor	室内 Indoor
19	扶手带速度检测装置 Fault pole (disconnection pole, opposite pole) protection	当扶手带速度偏离梯级或踏板实际速度大于-15%，且持续时间大于15秒时，自动扶梯或自动人行道停止运行。 FEC or FRG stop operation when the speed of the handrail deviates from the step or pedal and the actual speed is greater than -15% and the duration is greater than 15 seconds.	S	S	S
20	防夹装置（围裙板刷） Clamping device (apron brush)	降低梯级和围裙板之间挤夹风险的装置。 A device to reduce the risk of pinching between steps and apron boards.	S	S	O
21	检修楼层盖板打开检测 Inspect floor cover plate opening inspection	当楼层板打开时，自动扶梯或自动人行道停止运行。 When the floor board opens, FEC or FRG stops running.	S	S	S
22	制停距离监测装置 Stop distance monitor	当制停距离超过规定制停距离最大值的1.2倍时，自动扶梯或自动人行道在故障锁定被复位之后才能重新启动。 FEC or FRG stop operation when foreign matter gets stuck on the guard at the entrance of the hand strap.	S	S	S
23	扶手带静电防护装置 Armrest with electrostatic protection device	防止扶手带运行过程中与扶手导轨摩擦时的静电现象产生。 Avoid the static phenomenon of friction between the handrail and the guide rail during the operation of the handrail.	S	S	S
24	启动蜂鸣器报警 Start the buzzer alarm	自动扶梯或自动人行道启动时蜂鸣器响起，以警示自动扶梯或自动人行道启动运行。 When FEC or FRG starts, the buzzer sounds to alert FEC or FRG to start running.	S	S	S
25	水位开关 Water level switch	当位于底层下机房水位达到一定高度，自动扶梯或自动人行道将停止运行。 When the water level reaches a certain height in the bottom machine room, FEC or FRG will stop operation.	O	S	O
26	上部控制箱故障显示 Upper control box failure display	当有安全开关动作，故障屏幕将显示代码，提示故障。 When there is a safety switch action, the fault screen will display the code to indicate the fault.	S	S	S
27	上、下机房防护罩 Upper and lower machine room protective cover	安装于自动扶梯、自动人行道驱动站或转向站处，保护维修保养人员的安全。 Installed in FEC, FRG drive station or steering station to protect the safety of maintenance personnel.	S	S	S
28	黄色警戒线标志 Yellow police tape	黄色警戒线位于自动扶梯梯级的前端和两边及自动人行道踏板两边，用于警示乘客不能站立在相邻梯级之间及梯级、踏板的边缘。 The yellow police line is located at the front and both sides of the FEC steps and both sides of the FRG pedal to warn passengers not to stand between adjacent steps and the edge of steps and pedals.	S	S	S
29	梯级警戒灯 Step warning light	绿色LED灯安装在出入口梯级或踏板的下方，以帮助乘客容易识别起步梯级或踏板间的界限，提高安全性。 Green LED lights are installed below the entry and exit steps or pedals to help passengers easily identify the boundary between the starting steps or pedals and improve safety.	O	O	O
30	梳齿照明 Comb lighting	安装在上、下部出入口两侧的围裙板上，为梯级或踏板及梳齿板提供照明，以方便乘客上下自动扶梯或自动人行道。 Installed on both sides of upper and lower entrances and entrances to provide illumination for step or pedal and comb teeth plate for passengers to get up and down FEC or FRG.	O	O	O
31	外置式运行方向指示 External direction indication	能向乘客提供清晰的自动扶梯或自动人行道的运行方向，提高安全性。 It can provide passengers with clear operation direction of FEC or FRG and improve safety.	O	O	O
32	省能源系统 Energy saving system	自动扶梯和自动人行道在无负载的情况下停止或以低于名义速度运行的一种节能模式。（该装置采用漫反射微波探头检测人员出入，有效避免光线干扰、颜色干扰。） An energy saving mode in which FEC and FRG stop or operate at a nominal speed without load. (the device USES diffuse reflection microwave probe to detect personnel access, effectively avoiding light interference, color interference.)	O	O	O
33	自动加油装置 Automatic fueling gear	根据设定时间，自动完成各传动链的润滑。 According to the set time, automatically complete the lubrication of each transmission chain.	O	S	O
34	梯级上冲安全保护装置 Surge safety protection device on step	当异物被夹在梯级之间及梯级被向上推起时，自动扶梯将停止运行。 When the foreign body is sandwiched between the steps and the steps are pushed up, the FEC will stop running.	O	O	—
35	扶手带断带保护 Handrail break protection	如果扶手带断裂，自动扶梯或自动人行道将停止运行。 If the handrail breaks, FEC or FRG will stop running.	O	O	O
36	检修锁 Lock for maintenance	转换正常与检修状态，防止检修过程中的误动作。 Change the normal and maintenance status to prevent wrong actions in the maintenance process.	O	O	O

功能特点

标准配置

可选配置

安全装置

土建布置图

布置方案

规格表

功能配置表

建筑与工程

关于我们

以客户为尊

# 建筑与工程（客户自理）

## Civic Construction Requirement (Owner's Responsibility)

### 相关建筑工程

#### Relevant Construction

- 1、安装自动扶梯&自动人行道所需的支撑梁及洞口。安装中间支撑的梁。  
在土建楼板下安装吊钩或在天花板内预留管套孔用来吊装自动扶梯&自动人行道的桁架及支撑梁
  - 2、桁架地坑的防水工程。
  - 3、自动扶梯&自动人行道安装完成以后，相关区域的修整及装饰。
  - 4、在安装调试期间，自动扶梯&自动人行道周围安装安全护栏等安全措施以防工地人员坠落。
  - 5、预留入口及能确保将桁架运到建筑物内安装位置的通道，以及安装完毕以后对以上预留口的修复工程。
  - 6、在工地现场具备材料放置仓库。
  - 7、安装自动扶梯&自动人行道的装饰工程。在外装饰板上安装照明（如需要）。
  - 8、安装防火卷帘门和消防喷水系统（如需要）。
- 1、 Install support beams and entrances for escalators and moving walkways.  
Install beams for central support.  
Install lift hooks under building floors or reserve pipe sleeves in ceilings to hoist trusses and support beams of escalators & moving walkways.
  - 2、 Waterproof Project of Truss Pits.
  - 3、 Finishing and decoration of relevant areas after installation of escalators & walkways.
  - 4、 During installation and debugging, safety facilities like guardrails are installed around escalators & moving walkways to prevent construction personnel from falling.
  - 5、 Reserve an entrance and a channel which guarantees that the truss can be transported to the installation position and repair the reserved entrance after the installation is completed.
  - 6、 The construction site has a material warehouse.
  - 7、 Projects for installing exterior decorations of escalators & moving walkways. Install lighting equipment on exterior decoration panels (if required).
  - 8、 Install fireproof roller shutters and fire sprinkler systems. (if required).

### 相关电气工程

#### Relevant Electric Engineering

- 1、至自动扶梯&自动人行道桁架内机房控制柜的引入工程（包括动力和照明电源线、接地线、远程监控等装置的通讯线缆等）。
  - 2、自动扶梯&自动人行道到防火卷帘门的导线管和线缆（如需要）。
  - 3、提供外部装饰和照明开关（如需要）。
  - 4、提供安装和调试工程所需要的电源。
  - 5、提供应急照明。
- 1、 The electrical projects of the machine rooms in the trusses of escalators & moving walkways (including power and lighting wires, ground wires and communications cables of remote monitoring equipment and other devices).
  - 2、 Wire conduits and cables from escalators & moving walkways to fireproof roller shutters (if required).
  - 3、 Provide exterior decorations and lighting switches (if required).
  - 4、 Provide needed power sources for project installation and debugging.
  - 5、 Provide emergency lighting equipment.

### 周围安全措施

#### Surrounding Safety Measures

- 1、如自动扶梯&自动人行道之间或同建筑楼板间有间隙，必须提供进入防止板及安全护栏以防坠落。
  - 2、如相邻两台自动扶梯&自动人行道之间的间隙或自动扶梯&自动人行道间隙超过200mm，需提供防坠落安全网。
  - 3、为防止儿童在自动扶梯&自动人行道上及周围玩耍，需提供标志牌、警告板或公共告示设施。
  - 4、垂直防护挡板：  
如果建筑物会引起人员伤亡，则应采取相应的预防措施。尤其是在与楼板交叉处以及各交叉布置的自动扶梯&自动人行道之间，应在扶手带上方设置一个无锐利边缘的垂直防护挡板，其高度不应小于0.3m，且至少延伸至扶手带下缘25mm处，例如：采用一块五孔的三角板。如果扶手带外缘与任何建筑物之间的距离大于或等于400mm时，则无需遵守该要求。
- 1、 If there is a gap between escalators, moving walkways or floors of the same building, entrance prevention boards and guardrails must be provided to avoid falling.
  - 2、 If the gap between two adjacent escalators or two adjacent moving walkways is more than 200mm wide, a safety net is needed to prevent falling.
  - 3、 In order to prevent children from playing on or around escalators & moving walkways, signs, warning boards or public notice facilities need to be provided.
  - 4、 Vertical Protective Boards.  
If buildings may lead to damage to personnel, corresponding protective measures should be taken. A vertical protective board without sharp edges should be arranged on handrails which cross with building floors or with handrails of other escalators & moving walkways. The vertical protective board should not be less than 0.3m high and should extend 25mm under the bottom edge of the handrail. For example, a triangular board with 5 holes is used. If the distance between the outer edge of handrail and any building is no less than 400mm, there is no need to comply with the requirements.



# 建筑与工程（客户自理）

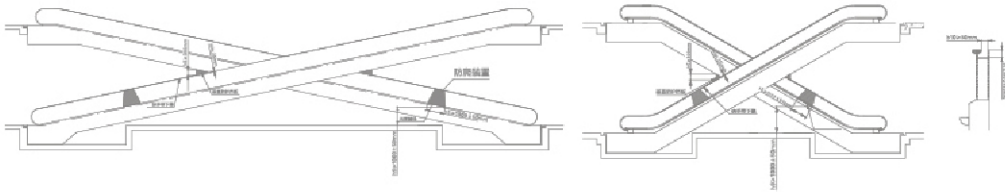
## Civic Construction Requirement (Owner's Responsibility)

### 防爬装置

Anti-climb Device

扶手装置应没有任何部位可供人员站立。如果存在人员跌落的风险，应采取适当的措施阻止人员爬上扶手装置外侧。为确保这一点，自动人行道（仅倾斜型）的外盖板上应安装防爬装置。防爬装置位于地平面上方（ $1000 \pm 50\text{mm}$ ），下部与外盖板相交，行于外盖板方向上的延伸长度不应小于 $1000\text{mm}$ ，并确保在此长度范围内无踩脚处。该装置的高度应至少与扶手带表面平齐，并符合图一中的尺寸规定。用于安装防爬装置的外露紧固件头部应是非常规型。

There shouldn't be any place for people to stand on handrails. If there is a risk that people may fall, proper measures should be taken to prevent people from climbing on the outer side of a handrail. In order to prevent the risk, the outer cover plate of the moving walkway should be equipped with an anti-climb device. The anti-climb device is  $1,000 \pm 50\text{mm}$  above the ground; the bottom part of the anti-climb device intersects the outer cover plate; the length of the extension running in the direction of the outer cover plate shouldn't be less than  $1,000\text{mm}$ ; there shouldn't be any place for people to step on within the scope of the length. The device should be even with the handrail surface at least and meet the size stipulated in the Picture 1. The head of the exposed fastener used for installation of the anti-climb device should be non-conventional.

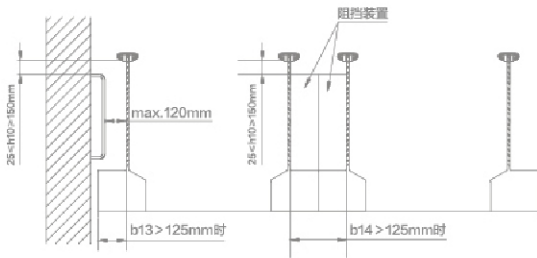


### 阻挡装置

Stop Device

当自动人行道与墙相邻，且外盖板的宽度 $b_{13}$ 大于 $125\text{mm}$ 时，在自动人行道的上、下端部应安装阻挡装置防止人员进入外盖板区域。当自动人行道为相邻平行布置时，且共用外盖板的宽度 $b_{14}$ 大于 $125\text{mm}$ 时，也应安装这种装置。该装置应延伸到高度 $h_{10}$ 。用于安装阻挡装置的外露紧固件头部应是非常规型。

When a moving walkway is adjacent to a wall and the width  $b_{13}$  of the outer cover plate is greater than  $125\text{mm}$ , a stop device should be respectively installed at the upper and bottom ends of the moving walkway to prevent people from entering the cover plate area. When adjacent moving walkways are parallel and the width  $b_{14}$  of the common outer cover plate is greater than  $125\text{mm}$ , such stop device should also be installed. The device should extend to the height  $h_{10}$ . The head of the exposed fastener used for installation of the stop device should be non-conventional.

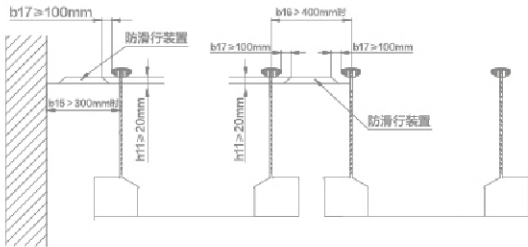


### 防滑行装置

Anti-skid device

当倾斜型自动人行道和相邻的墙之间装有接近扶手带高度的扶手盖板，且建筑物（墙）和扶手带中心线之间的距离 $b_{15}$ 大于 $300\text{mm}$ 时，应在扶手盖板上装设防滑行装置。该装置应包含固定在扶手盖板上的部件，与扶手带的距离 $b_{17}$ 不应小于 $100\text{mm}$ ，并且防滑行装置之间的间隔距离不应大于 $1800\text{mm}$ ，高度 $h_{11}$ 不应小于 $20\text{mm}$ 。该装置应无锐角或锐边。对于相邻并列布置的倾斜型自动人行道，扶手带中心线之间的距离 $B_{16}$ 大于 $400\text{mm}$ 时，也应满足上述要求。

When a handrail cover plate which is nearly as high as the handrail is arranged between an inclined moving walkway and its adjacent wall and the distance  $b_{15}$  between the building wall and the central line of the handrail is greater than  $300\text{mm}$ , an anti-slip device should be arranged on the handrail cover plate. The device should have a part fastened onto the handrail cover plate; the distance  $b_{17}$  between the device and the handrail should be less than  $100\text{mm}$ ; the distance between anti-slip devices should not be greater than  $1,800\text{mm}$ ; the height  $h_{11}$  of the device should not be less than  $20\text{mm}$ . The device should not have sharp corners or edges. As for adjacent and parallel inclined moving walkways, when the distance  $B_{16}$  between central lines of handrails is greater than  $400\text{mm}$ , the above requirements should also be met.



功能特点

标准配置

可选配置

安全装置

土建布置图

布置方案

规格表

功能配置表

建筑与工程

关于我们

以客户为尊



# 关于我们

## About Us

上海富士电梯成立于1992年,是中国电梯行业的先行者、开拓者、实践者与创新者之一。作为中国最早成立的民族电梯品牌之一,上海富士电梯拥有电梯制造、安装、改造、维修A级资质,是上海市高新技术企业,专注电梯服务近三十年,取得了不俗成绩,经典案例包括北京西客站、武汉中国中华城、曲靖雄业金都国际、印尼雅加达国际机场、老挝万象大酒店、浙江红船干部学院等,深受国内外广大用户的信赖。2018年1月,荣获2017年度全国政府采购电梯最佳服务品牌,2018年4月,出任中国电梯协会理事,2019年1月,荣获“2018年度全国政府采购最具竞争力品牌”、“2018年度全国政府采购旧楼加装电梯优秀品牌”,2019年10月,入围中国电梯制造商15强,名列第13位,2020年3月,荣获全国产品和服务质量诚信示范企业、全国质量检验稳定合格产品,连续多年被评为“上海名牌”。

Established in 1992, SHANGHAIFUJIELEVATOR is not only one of the pioneers, practitioners and innovators of Chinese elevator industry, but also one of the earliest runners of national elevator brands, owns A-class qualification in manufacturing, installation, modernization and maintenance, focusing on elevator services for nearly 30 years, made remarkable achievements during the past decades, Classic cases include Beijing West Railway Station, Wuhan City of China, Qujing Xiongye Jindu International, Jakarta International Airport, Vientiane Hotel, Zhejiang Redboat Executive Leadership, etc. won the award of BEST SERVICE Brand for National Government Elevator Procurement in January 2018, elected to the council unit of China Elevator Association In April 2018, in January 2019, won the Most Competitive Brand of National Government Elevator Procurement & the Excellent Brand elevator for existing buildings of National Government Elevator Procurement in 2018, In October 2019, shortlisted top 15 of China's elevator manufacturers, ranked 13th. In March 2020, won the National Product and Service Quality Integrity Benchmark Enterprise and National Stable and Standard Products Passed by CAQI, awarded Shanghai Famous Brand for consecutive years.

上海富士电梯是中国生活电梯新品类的开创者、代表者和引领者——专注、精致、考究的上海工业精神是上海富士电梯的灵魂和内心准则,在传承与创新中不断焕发生机;无论研发、设计、制造、销售、安装、维保乃至旧梯改造与新梯加装业务,上海富士电梯都以匠人为标准,苛求完美、精益求精,成就客户最佳服务;每一部电梯都是对于生活的诚意之作,每一部电梯都是倾注匠心的传承级品质之作。

SHANGHAIFUJIELEVATOR is the inaugurator of life elevator category, putting hearts into focused, refined, sophisticated of, which represents soul of Shanghai industrial spirit, in the inheritance and innovation in the continuous vitality. In research and development, design, manufacturing, sales, installation, maintenance, modernization and elevator adding for old buildings, SHANGHAIFUJIELEVATOR is on the basis of craftsmen, demanding perfection, keep improving, rendering customers the best service, make each elevator our sincerity to work for life and poured originality level of quality.

上海富士电梯生产基地位于上海自贸新片区,海陆空交通都非常便利,拥有垂直电梯和自动扶梯两大现代化的智能制造基地,全新的研发中心大楼将于2020年落成。依托上海国际大都市的全方位优势,上海富士电梯以先进的管理意识和经营方式,不断迭代创新,以品牌化运作构建竞争优势,以信息化平台提升管理效率,以服务化战略助推产业升级,致力于成为优秀的全球建筑交通解决方案服务商,奉献舒适、智能、安全、精致的城市生活友好之梯。

SHANGHAIFUJIELEVATOR Production Base locates in Shanghai Pilot Free Trade Zone, Shanghai with very convenient transportation of air, land and sea, with two modern intelligent manufacturing bases of elevator, escalator and moving walkway. The new building of Research and Development Center will be completed by the end of 2020. Relying on the comprehensive advantages of Shanghai international metropolis, SHANGHAIFUJIELEVATOR has built a competitive advantage by virtue of its advanced management awareness and management mode, continuous iterative innovation and branding operation. To improve the management efficiency of the information platform, to serve the strategy to promote the upgrading of the industry, we committed to becoming one of the most excellent provider for global construction transportation solutions, dedicate comfort, intelligence, safe, friendly elevator, escalator and moving walkway to life of urban city.





# 发展历程

## Company Milestone

1992年7月,上海富士电梯成立。公司注册资本15000万元。  
1993年1月,研制出中国第一支电梯空心导轨。  
1997年11月,首台电梯通过上海交通大学电梯检测中心整机性能测试。  
2001年6月,中标当年全国最大的订单——河南安阳行政小区203台高品质住宅生活电梯。  
2007年11月,被上海市经委评为2007年度“品牌产品”和“品牌企业”。  
2007年12月,被上海市质量协会认定为“上海市实施用户满意工程先进单位”。  
2008年4月-8月,载重1600kg、速度4m/s乘客电梯、载重10000kg载货电梯、载重10000kg汽车电梯、载重1600kg、速度2m/s观光电梯、载重2000kg、速度2m/s无机房乘客电梯、观光电梯、载货电梯通过上海交大电梯检测中心整机性能测试。  
2009年5月,取得高速电梯上梁、轿底、LED吊顶照明等8项专利。  
2009年12月,被上海市名牌产品推荐委员会评为“上海名牌”。  
2010年12月,被上海市科委认定为“上海市高新技术企业”。  
2013年5月,自动扶梯、自动人行道20000平方米新总装车间正式投产,年生产能力一万三千台。  
2013年12月,被上海市科委认定为“上海市科技小巨人(培育)企业”。  
2016年5月,亮相2016中国国际电梯展,率先发布第一代生活电梯,以主题工匠日和主题生活日两大特色活动轰动展会,获得热烈反响。  
2017年3月,西北营销服务中心成立。  
2018年1月,荣获“全国政府采购电梯最佳服务品牌”。  
2018年4月,当选中国电梯协会理事单位。  
2018年5月,在2018中国国际电梯展独家发布全新一代生活电梯、新一代别墅电梯、生活'IDE'加装电梯和青年志愿者服务公益形象大使——安安。  
2018年7月,西南营销服务中心成立。  
2018年9月,被评选为上海市奉贤区企业文化建设示范点单位。  
2018年10月,亮相拉脱维亚上交会。  
2019年1月,荣获“2018年度全国政府采购最具竞争力品牌”、“2018年度全国政府采购旧楼加装电梯优秀品牌”。  
2019年4月,精彩亮相廊坊国际电梯展。  
2019年5月,荣登2019中国品牌价值机械制造排行榜TOP50。  
2019年7月,荣获信用中国·(行业)最具竞争力十大诚信品牌。  
2019年9月,亮相土耳其上交会。  
2019年9月,荣获全国质量信得过产品、全国质量诚信标杆企业。  
2019年10月,入围中国电梯制造商15强,名列第13位。  
2019年11月,浙江红船干部学院加装电梯荣获中国电梯2016-2018年经典电梯工程项目奖。  
2020年3月,荣获全国产品和服务质量诚信示范企业、全国质量检验稳定合格产品。

In July 1992, SHANGHAI FUJI ELEVATOR was founded, the registered capital was 150 million yuan.  
In January 1993, successfully created the first hollow guide rail in China.  
In November 1997, the first elevator passed the complete machine function test by the elevator testing center of Shanghai Jiao Tong University.  
In June 1992, successfully bid the biggest order in China to provide 203 high-quality residential life elevators to Anyang city, Henan province.  
In November 2007, evaluated as 2007 Brand Product and Brand Enterprise by Shanghai Economics Committee.  
In December 2007, recognized as Shanghai Advanced Unit of Customer Satisfaction Project by Shanghai Quality Association.  
From April to August in 2008, 1600kg with 4m/s passenger elevator, 10000kg cargo elevator, 1600kg car elevator, 1600kg with 2m/s observation elevator, 2000kg with 2m/s machine room less passenger elevator, observation elevator and cargo elevator passed the whole machine performance test by the elevator testing center of Shanghai Jiao Tong University.  
In May 2009, achieved 8 patents including high-speed elevator cross bar, car platform, LED ceiling lighting.  
In December 2009, evaluated as Shanghai Brand by Shanghai Brand Produce Recommendation Committee.  
In December 2010, assessed as Shanghai Hi-tech Enterprise by Shanghai Economics Committee.  
In May 2013, the new assembly factory of escalator, Walkway Series with 20 thousand square meters was put into production and the annual producing ability was 13 thousand.  
In December 2013, assessed as Shanghai Small Giant Enterprise of technology by Shanghai Economics Committee.  
In May 2016, made a stage pose at China International Elevator Exhibition 2016, with the theme craftsmen and city life, received enthusiastic response.  
In March 2017, the Northwest Marketing Service Center was established.  
In January 2018, won the Best Service Brand of National Government Elevator Procurement.  
In April 2018, elected to the council unit of China Elevator Association.  
In May 2018, the new life elevator, new villa elevator, IDE elevator for existing buildings and ANAN, the ambassador of youth volunteer services, exclusively released at the China International Elevator Exhibition 2018.  
In July 2018, the Southwest Marketing Service Center was established.  
In September 2018, it was elected as the demonstration unit of corporate culture of Fengxian District.  
In October 2018, made a stage pose at Latvia's first Shanghai International Trade Fair.  
In January 2019, won the Most Competitive Brand of National Government Elevator Procurement & the Excellent Brand elevator for existing buildings of National Government Elevator Procurement in 2018.  
In April 2019, made a stage pose at Langfang International Elevator Exhibition 2019.  
In May 2019, Ranked TOP50 in China brand value machinery manufacturing list 2019.  
In July 2019, won the top 10 most competitive credit brands in China.  
In September 2019, made a stage pose at Turkey's Shanghai International Trade Fair.  
In September 2019, won the National quality integrity benchmark enterprises & National quality trust products.  
In October 2019, shortlisted top 15 of China's elevator manufacturers, ranked 13th.  
In November 2019, Zhejiang Redboat Executive Leadership Academy won the Classic Elevator Project of China Elevator.  
In March 2020, won the National Product and Service Quality Integrity Benchmark Enterprise and National Stable and Standard Products Passed by CAQI.

功能特点

标准配置

可选配置

安全装置

土建布置图

布置方案

规格表

功能配置表

建筑与工程

关于我们

以客户为尊



# 以客户为尊，时间即生命

## Put Clients First, Time is Life

上海富士电梯将“以客户为尊，时间即生命”的服务理念深入到每一个服务环节中，从售前、售中到售后，上海富士电梯建立了严谨的服务管理体系，积极应对客户咨询，提供详细使用指导，对安装维保作出快速响应，以优质服务换取客户的高度认可。

SHANGHAI FUJI ELEVATOR infiltrates service idea of “put clients first, time is life” into each service link. From presales, in sales to after sales, SHANGHAI FUJI ELEVATOR establishes rigorous service management system, actively responds to clients' consultancy, provides detailed using direction, gives fast response to installment and maintenance, and treats quality service for clients' highly recognition.



### 至始至终的服务理念

始于客户的土建，直至产品的终身使用年限，上海富士电梯全程提供最贴心的精细化服务。

### Consistent service idea

Civil engineering starting from clients extending to life long service of products; Shanghai Fuji Elevator provides the most considerate and refined service.

### 24小时急修服务

上海富士电梯为紧急排除故障而特设的24小时客户热线，将在第一时间为您提供服务。

### 24-hour emergent service

SHANGHAI FUJI ELEVATOR sets 24-hour hotline exclusively for emergent trouble clearing, providing service in the first time.

### 覆盖全国的售后服务网络

上海富士电梯在全国各主要城市均设有分支机构，为当地客户做出第一时间的响应及快捷的备件供应。

### Cover national after-sales service network

SHANGHAI FUJI ELEVATOR sets up branches in major cities in China, and makes first response for clients and provides expedient backup supply.



功能特点

标准配置

可选配置

安全装置

上海富士电梯

布置方案

规格表

功能配置表

建筑与工程

关于我们

以客户为尊

SH-FUJI  
上海富士电梯



## 传承级品质电梯

INHERITANCE-QUALITY ELEVATOR

上海富士电梯有限公司  
SHANGHAI FUJI ELEVATOR CO., LTD.

上海市奉贤区大叶公路7505-7515号  
No. 7505-7515 Daye Road, Fengxian District, Shanghai, China

总机 Switchboard: 021-57559666  
传真 Fax: 021-57559735 / 57559739  
E-mail: shfuji@sh-fuji.cn  
服务电话 Tel: 400-820-6026 / 800-820-6026  
www.sh-fuji.cn



官方微信

本样册仅供参考, 本公司保留随时更新产品设计与规格的权利。  
样册内产品信息说明不构成任何担保或承诺, 不视作产品服务合同条款。  
The publication is for reference only and SHANGHAI FUJI ELEVATOR reserves the right at any time to alter the product design and specifications. No product introduction the publication contains shall be construed as a warranty or condition, so as any terms of product or service contracts.



上海名牌  
Shanghai Brand



上海高新技术企业  
Shanghai Hi-tech Enterprise



ISO 9001



ISO 14001



GB/T 28001



采用国际  
标准产品  
Adaptation of international  
standard products

版本号: 2004V1P3-ES-81