



上海富士电梯  
SHANGHAI FUJI ELEVATOR



医用电梯

Medical Elevator

上海富士电梯有限公司  
SHANGHAI FUJI ELEVATOR CO., LTD.





# 上海富士电梯医用电梯

SHANGHAI FUJI ELEVATOR  
Medical Elevator

人性关怀，可靠安全，绿色节能

Human Care, Reliability And Security, Green Energy Conservation

我们从未停止探索多元垂直运输的脚步  
我们坚守传承，也更懂得突破和创新  
电梯不止为运输，更是空间场所与人互动的延伸  
特殊环境需要与之相配的电梯产品  
上海富士电梯医用电梯系列，专为医疗环境特别设计  
可靠安全，绿色节能，灵动人性关怀

We have never stopped exploring the diverse vertical transport  
We stick to inheritance and know more about breakthroughs and innovations  
Elevators are not only for transport but also the extension between the space place and human interaction  
Special environment calls for the corresponding elevator products  
Shanghai Fuji Elevator hospital elevator series is specially designed for special medical environment.  
Reliability and security, green energy conservation, flexible human care

# 目录

# Contents

功能特点 Function Characteristics	P01
标配轿厢 Standard Car	P04
选配轿厢 Optional Car	P05
装潢配件 Decoration Optional	P07
井道布置图 Hoistway Layout	P09
技术规格表 Technical Specifcation Memo	P09
功能配置表 List Of Configuration Specification	P11
关于我们 About Us	P13
智立方™ 电梯物联网系统 Intelligent Cube™ The IoT System Realtime	P15
以客户为尊 Put Clients First	P16



# 功能特点

## Function Characteristics

### 多重安全 加倍安心

#### Multilevel Security, Redoubled Reassurance

安全是我们的首要生活需求。“安全第一”不仅是口号，更需付诸行动。上海富士电梯始终将电梯安全作为产品研制的核心标准，医用电梯系列搭载高稳定性控制系统、三大先进核心安全部件在内的多重安全防护装置，满足医用环境下的安全需求。

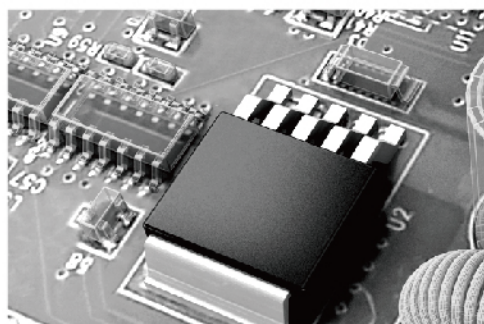
Security is our primary life demands. "Safety first" is not only a slogan but also needs to be put into practice. Always adhering to the elevator security as the core standard of the product R&D, Shanghai Fuji Elevator is able to satisfy the security requirements under the medical environment with its high stability control system and multiple safety protection device such as three major core safety components.

### 控制驱动一体化高稳定性控制系统

#### Control-driven Integrated High Stability Control System

采用新一代控制驱动一体化系统，基于先进驱动算法，融合精准控制技术，集高速远距离大数据传输的CANBUS总线串行通讯、先进故障自诊断与日志等功能，具备超强抗电磁干扰能力、超强抗静电能力，系统高度稳定可靠。

It uses a new generation control-driven integrated system. Based on advanced driving algorithm, precision control technology, high speed, long distance and large data transmission CANBUS bus serial communication, advanced fault self-diagnosis and daily record function, it has strong anti-electromagnetic interference ability, strong electrostatic discharge and system high stability and reliability.



### 多元安全防护系统

#### Diverse Safety Protection System

上海富士电梯医用电梯系列集成抱闸力自动检测、防溜车保护、逆向运行保护、钢丝绳防打滑保护、上下行超速监测、轿厢意外移动保护、门锁异常自动开门保护等多元安全防护系统。

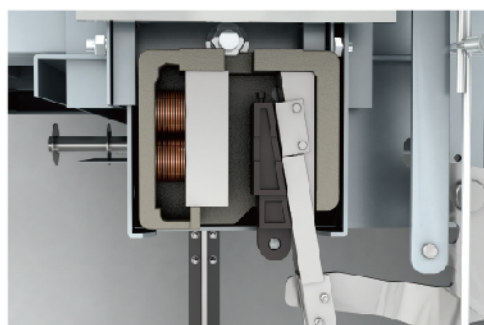
Shanghai Fuji Elevator Hospital Elevator Series is integrated with internal contracting brake force auto detection, anti-skid car protection, reverse operation protection, antiskid protection of steel wire rope, up-down over-speed monitoring, car accidental movement protection, abnormal automatic opening protection of door lock and other diverse safety protection system.

### 油气分离高可靠性缓冲器

#### High Reliability Buffer For Oil-gas Separation

严选高品质缓冲器，创新油气分离设计，缓冲性能一致性极佳，表面包覆耐腐蚀涂层，更强环境适用性。

It strictly selects the high quality buffer and innovates the gas-oil separation design with good cushioning property uniformity, corrosion resistant layer on the surface and strong environment applicability.



### 严选安全部件

#### Strict Selection Of Safety Component

上海富士电梯医用电梯系列以严谨的开发设计细节和严苛的品质要求标准，严选安全部件，所有合格的安全部件必须经过上海富士电梯技术中心与品质中心双重检查与认证才可选用，于千万零部件中优选，只为周全每一安全闭环。

Shanghai Fuji Elevator Hospital Elevator Series strictly selects the safety components with its rigorous development and design details and strict quality standards. All qualified safety components can be used after passing the dual inspection and certification of Shanghai Fuji Elevator technical center and quality center. Optimum selection of tens of millions of components is only for every safety closed loop.



# 功能特点

## Function Characteristics

### 节能环保 人性设计

#### Energy Conservation And Environmental Protection, Humanized Design

上海富士电梯医用电梯系列严格遵循绿色低碳、节能环保理念，应用先进智能科技和优质创新设计，实现更低能源损耗，绿色低碳，在公共医疗场景中表现出色，高效节能。

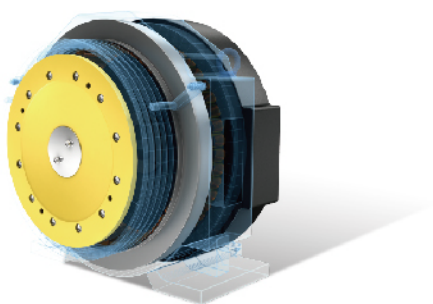
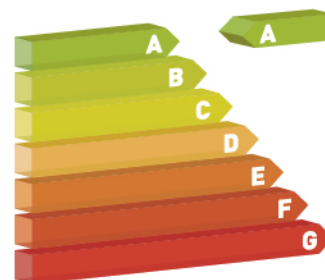
Strictly following the concept of green low-carbon, energy conservation and environmental protection, Shanghai Fuji Elevator Hospital Elevator Series is able to realize low energy consumption and green low carbon with its advanced intelligent technology, high quality innovative design, excellent performance in the public health scene, high efficiency and energy conservation.

#### A级能效认证

##### Level A Energy Efficiency Certification

基于智能科技与创新部件设计，上海富士电梯医用电梯系列能耗等级达A级标准，可节约高达70%以上的电费支出，更可每年减少碳排放2600公斤。

Based on intelligent technology and innovative component design, Shanghai Fuji Elevator Hospital Elevator Series is able to reach the energy consumption level of A standard, save up to 70% of electricity expenditure and reduce carbon emissions by 2600 kg annually.



#### 新一代PM永磁同步主机系统

##### New Generation Pm Permanent Magnet Synchronous Host System

采用全新节能理念下设计的新一代PM永磁同步主机系统，电机数提升至32级，更小发热量，热态效率满足二级能效；两组独立块式制动器磁路设计，制动器能耗、噪音、温升大幅降低。

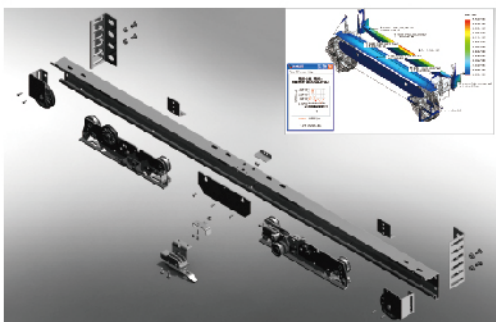
With the new generation PM permanent magnet synchronous host system under the new concept of energy conservation, the number of motors can be increased to 32 levels. The generating capacity of heat and thermal efficiency can meet the secondary energy efficiency. With two groups of independent block brake magnetic circuit design, the brake energy consumption, noise and temperature rise are significantly reduced.

#### 绿色节能LED照明

##### Green Energy-saving Led Lighting

上海富士电梯医用电梯系列选用长寿命、高发光效率的高端LED器件，耗电量仅为白炽灯的10%，荧光灯的50%，无频闪、无紫外线污染，显著降低能源消耗、减轻环境负担。

Shanghai Fuji Elevator Hospital Elevator Series uses the high-end LED devices with long life span and high luminous efficiency. The power consumption is only 10% of the filament lamp and 50% of the fluorescent lamp with no flash or ultraviolet pollution, which can significantly reduce energy consumption and environmental burden.



#### FEA计算优化设计

##### Fea Computational Optimization Design

全系列医用梯依托专业FEA有限元分析原理，对电梯各主要部件进行各项力学分析研究，进一步优化部件结构，保证产品全生命周期环境友好。

Relying on the professional FEA (Finite Element Analysis) Principle, the full series hospital elevator carries out the analysis study on the mechanical analysis, which can further optimizes the component structure and guarantee the environmental friendly life cycle.

功能特点

轿厢标选配

装潢配件

井道布置图

技术规格表

功能配置表

关于我们

物联网系统

以客户为尊

# 功能特点

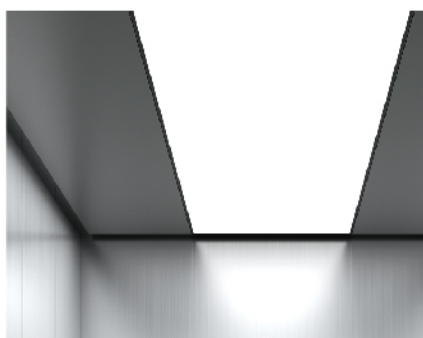
## Function Characteristics

### 人性关怀 舒适舒心

#### Human Care, Comfort

特殊医疗环境需要特别关怀。上海富士电梯医用电梯系列充分考虑医用特殊使用环境和使用人群，从空间的光环境与洁净度，乘梯的无障碍化等方面贴心设计，给予医护人员与病患人群人性关怀，舒适更舒心。

Special medical environment calls for special care. With the light environment and cleanliness of the space, accessibility of elevator and other intimate designs, Shanghai Fuji Elevator Hospital Elevator Series gives the human care to the medical workers and patients while fully taking into account of the medical special use environment and the users.



#### 高舒适度柔光空间

##### High Comfort Subdued Light Space

基于特殊医疗环境，上海富士电梯医用电梯系列贴心搭载柔光照明系统，led柔和光源配合多种创新光环境调节技术，光线柔和明亮的同时实现全域空间光线亮度与色温的统一性。即使是把视线聚焦于轿顶光源，也不会产生不适感。

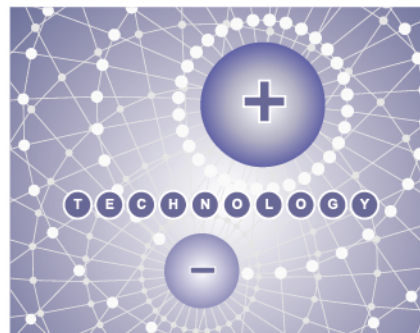
Based on the special medical environment, Shanghai Fuji Elevator Hospital Elevator series is able to realize the unity between the boost light and the color temperature in the global space with its subdued light illumination system, LED soft light source and a variety of innovative light environment adjustment technologies. It is able to focus the sight on the car roof light sources without causing discomfort.

#### 负离子除菌系统

##### Anion Sterilization System

针对医疗场所的高洁净度环境需求，上海富士电梯医用电梯系列全线标配负离子除菌系统，利用负离子游离电子杀菌、抑菌原理，净化轿厢空间，还原清新健康乘梯环境。

Shanghai Fuji Elevator Hospital Elevator Series full line standard configuration anion sterilization system is able to purify the car space and restore the fresh and healthy elevator riding environment according to the requirements of high cleanliness environment in medical places by using anion free electron sterilization and bacteriostatic principle.



#### 人性化乘梯关怀

##### Human Care For Elevator Riding

上海富士电梯医用电梯系列充分考虑医疗场景下的多元特殊使用人群，全面标配残障操纵盘和扶手，更方便特殊病患人群及医护人员工作使用，全程无障碍化乘梯体验。

Shanghai Fuji Elevator Hospital Elevator Series fully takes into account of the multiple special users under the medical scene and its disabled manipulator and handrail of comprehensive standard configuration can facilitate the special patients and medical workers to use it and guarantee the barrier-free elevator riding experience.



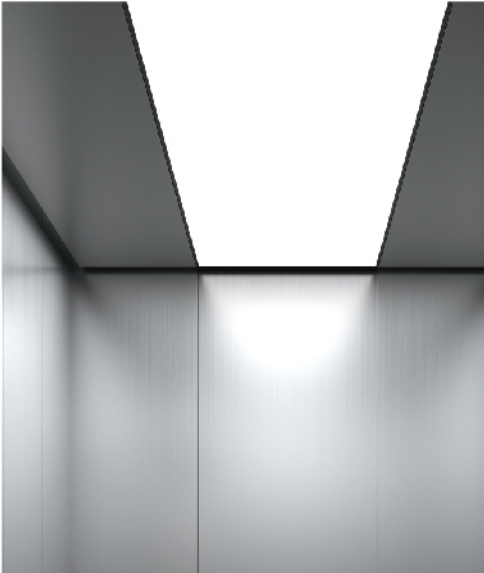
# 标配轿厢

## Standard Car

### CS050-B

- 吊顶：双层吊顶+LED无边框照明 SLM050-B
- 操纵箱：CP210
- 残障：DP290
- 地板：PVC AM51908
- 扶手：FS008
- 后壁：发纹不锈钢
- 侧壁：发纹不锈钢
- 前壁：发纹不锈钢
- 踢脚：发纹不锈钢

- Ceiling：Double Type + LED SLM050-B
- COP：CP210
- COP2：DP290
- Floor：PVC AM51908
- Handrail：FS008
- Back wall：Hairline SS
- Side wall：Hairline SS
- Front wall：Hairline SS
- Kick-plate：Hairline SS



功能特点

轿厢标配选配

装潢配件

井道布置图

技术规格表

功能配置表

关于我们

物联网系统

以客户为尊

# 选配轿厢

## Optional Car

### CS118-B

吊顶: 双层吊顶+LED CS118-B  
 操纵箱: CZ015DYFW  
 残障: DP290  
 地板: PVC AM51908  
 扶手: FS008  
 后壁: 发纹不锈钢+镜面不锈钢  
 侧壁: 发纹不锈钢  
 前壁: 发纹不锈钢  
 踢脚: 发纹不锈钢

Ceiling: Double Type + LED CS118-B  
 COP: CZ015DYFW  
 COP2: DP290  
 Floor: PVC AM51908  
 Handrail: FS008  
 Back wall: Hairline SS+Mirror SS  
 Side wall: Hairline SS  
 Front wall: Hairline SS  
 Kick-plate: Hairline SS



### CD012-B

吊顶: 不锈钢+LED DT012-B  
 操纵箱: CZ015DYFW  
 残障: DP290  
 地板: PVC AM51903  
 扶手: FS007  
 后壁: 镜面不锈钢  
 侧壁: 发纹不锈钢  
 前壁: 发纹不锈钢  
 踢脚: 发纹不锈钢

Ceiling: Stainless Steel + LED DT012-B  
 COP: CZ015DYFW  
 COP2: DP290  
 Floor: PVC AM51903  
 Handrail: FS007  
 Back wall: Mirror SS  
 Side wall: Hairline SS  
 Front wall: Hairline SS  
 Kick-plate: Hairline SS





# 选配轿厢

## Optional Car

### CS051-B

- 吊顶：全发光LED SLM051
- 操纵箱：CP210
- 残障：DP290
- 地板：PVC AM51908
- 扶手：FS007
- 后壁：镜面不锈钢
- 侧壁：发纹不锈钢
- 前壁：发纹不锈钢
- 踢脚：发纹不锈钢

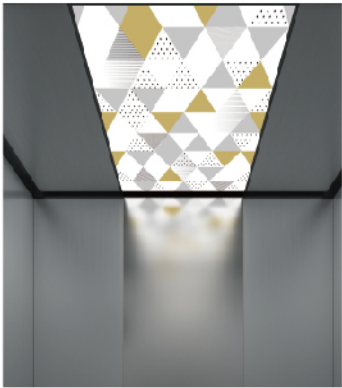
- Ceiling：Entire Illuminate LED SLM051
- COP：CP210
- COP2：DP290
- Floor：PVC AM51908
- Handrail：FS007
- Back wall：Mirror SS
- Side wall：Hairline SS
- Front wall：Hairline SS
- Kick-plate：Hairline SS



### CS050A-B

- 吊顶：双层吊顶+LED无边框照明 SLM050
- 操纵箱：CZ015DYFW
- 残障：DP290
- 地板：PVC AM51908
- 扶手：FS005
- 后壁：发纹不锈钢+镜面不锈钢
- 侧壁：发纹不锈钢
- 前壁：发纹不锈钢
- 踢脚：发纹不锈钢

- Ceiling：Double Type + LED SLM050
- COP：CZ015DYFW
- COP2：DP290
- Floor：PVC AM51908
- Handrail：FS005
- Back wall：Hairline SS+Mirror SS
- Side wall：Hairline SS
- Front wall：Hairline SS
- Kick-plate：Hairline SS



功能特点

轿厢标配选配

装潢配件

井道布置图

技术规格表

功能配置表

关于我们

物联网系统

以客户为尊

# 操纵箱

## Car Operating Panel

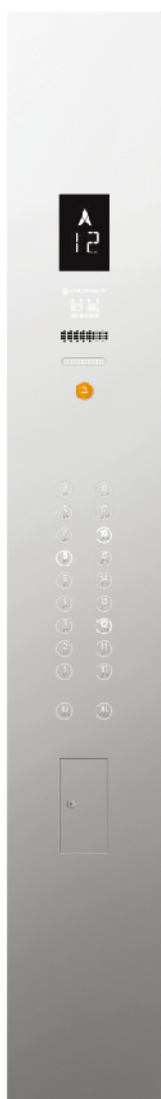


### CP210 S

材质：发纹不锈钢  
显示：七段码  
按钮：不锈钢 MA2J00

Material: Hairline SS  
Display: 7 sections  
Button: Stainless steel

\*建议配合LOP GWZ300  
\*Match for LOP GWZ300



### CP211 O

材质：发纹不锈钢  
显示：七段码  
按钮：不锈钢 MA2P07

Material: Hairline SS  
Display: 7 sections  
Button: Stainless steel

\*建议配合LOP GWZ301  
\*Match for LOP GWZ301



### DP290 O

材质：发纹不锈钢  
按钮：不锈钢 BAS171  
安装方式：卡入式

Material: Hairline SS  
Button: Stainless steel BAS171  
Installation way: Embedded



### DP291 O

材质：发纹不锈钢  
按钮：不锈钢 BAS171  
安装方式：壁挂式

Material: Hairline SS  
Button: Stainless steel BAS171  
Installation way: Easy fit type



### GW303 O

材质：发纹不锈钢  
显示：七段码

Material: Hairline SS  
Display: 7 sections

S 标配功能 Standard Equipped Functions

O 选配功能 Optional Functions



# 召唤盒

## Landing Operating Panel

### GWZ300 S

材质：发纹不锈钢  
显示：七段码  
按钮：发纹不锈钢圆按钮 MA2J00  
安装方式：壁挂式  
  
Material: Hairline stainless steel  
Display: 7 sections  
Button: Hairline SS round button MA2J00  
Installation: Easy fit type



### GWZ031DM

材质：发纹不锈钢  
显示：点阵  
按钮：发纹不锈钢圆按钮  
安装方式：壁挂式  
  
Material: Hairline SS  
Display: LED  
Button: Hairline SS round button  
Installation way: Easy fit type



### GWZ301

材质：发纹不锈钢  
显示：七段码  
按钮：发纹不锈钢圆按钮 MA2P07  
安装方式：壁挂式  
  
Material: Hairline SS  
Display: 7 sections  
Button: Hairline SS round button MA2P07  
Installation way: Easy fit type



### GWZ031DN

材质：发纹不锈钢  
显示：点阵  
按钮：发纹不锈钢圆按钮  
安装方式：壁挂式  
  
Material: Hairline SS  
Display: LED  
Button: Hairline SS round button  
Installation way: Easy fit type



# 轿厢扶手（可选）

## Handrail（Optional）



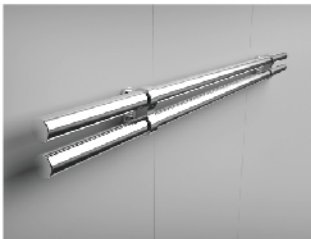
### FS001

不锈钢  
Stainless steel



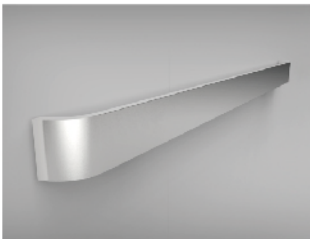
### FS005

不锈钢  
Stainless steel



### FS007

不锈钢  
Stainless steel



### FS008

不锈钢  
Stainless steel

功能特点

轿厢标配

装潢配件

井道布置图

技术规格表

功能配置表

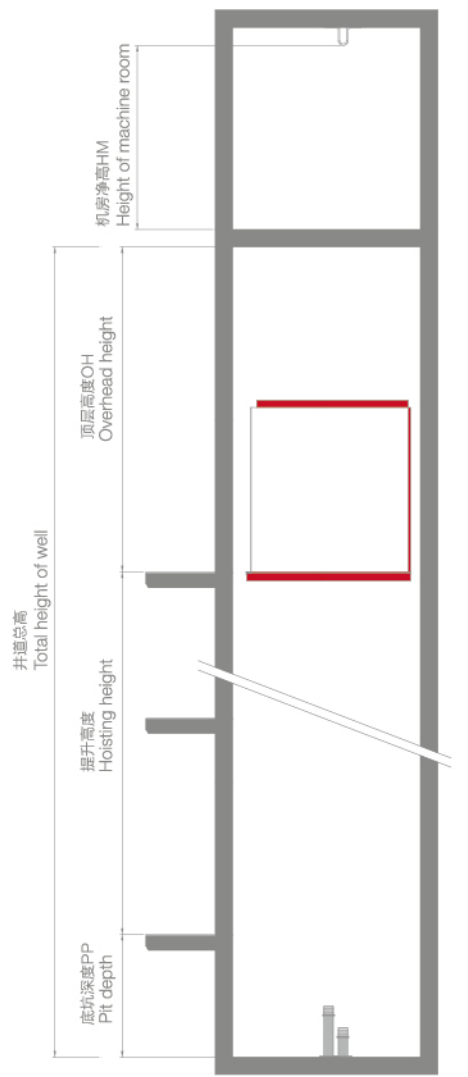
关于我们

物联网系统

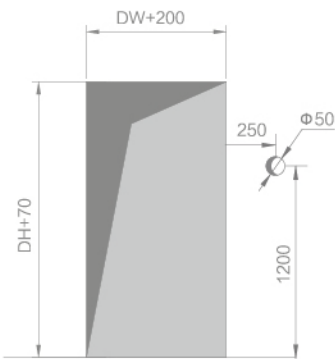
以客户为尊

# 小机房医用梯井道布置图

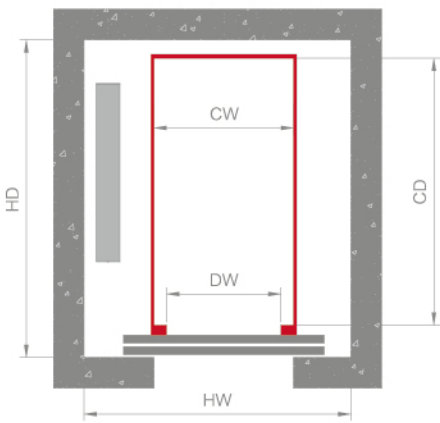
## Hoistway Layout



井道立面图  
Drawing of Hoistway (vertical view)



层门留孔图  
Cut-out for landing door



井道平面图  
Drawing of Hoistway (plan view)

# 技术规格表

## Technical Specification Sheet

小机房医用梯  
Small Machine Room Medical Elevator

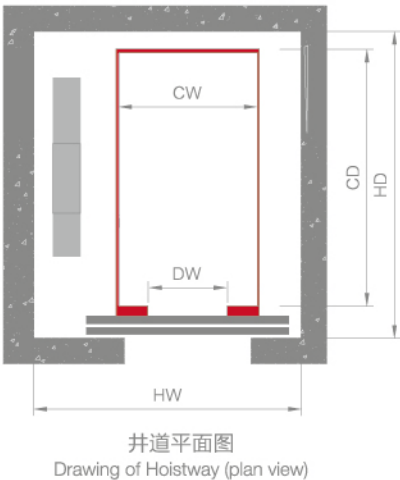
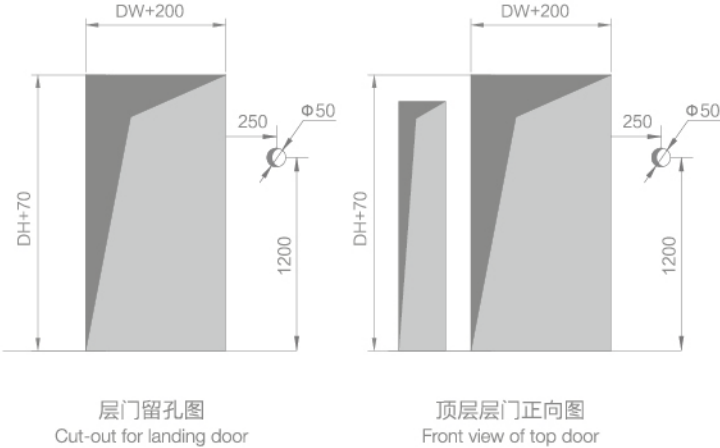
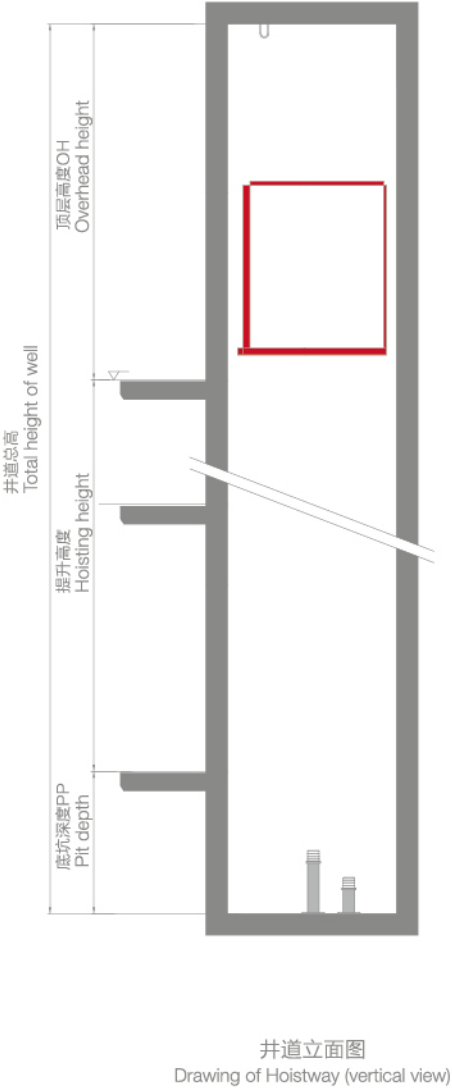
载重(kg)	轿厢尺寸(mm) 宽(CW) × 深(CD)	中分门(mm) 宽(DW) × 高(DH)	井道尺寸(mm) 宽(HW) × 深(HD)
1600	1500 × 2300	1100 × 2100	2600 × 2800

速度m/s	底坑深度(mm) PP	顶层高度(mm) OH	机房高(mm) HM
1.0	≥ 1500	≥ 4500	≥ 2500
1.5	≥ 1600	≥ 4700	≥ 2500
1.75	≥ 1600	≥ 4700	≥ 2500



# 无机房医用梯井道布置图

## Hoistway Layout



# 技术规格表

## Technical Specification Sheet

无机房医用梯  
Machine Roomless Medical Elevator

载重(kg)	轿厢尺寸(mm) 宽(CW) × 深(CD)	中分门(mm) 宽(DW) × 高(DH)	井道尺寸(mm) 宽(HW) × 深(HD)
1600	1500 × 2300	1100 × 2100	2670 × 2800

速度m/s	底坑深度(mm) PP	顶层高度(mm) OH
1.0	≥1700	≥4500
1.5	≥1900	≥4600
1.75	≥1900	≥4600

功能特点

轿厢标选配

装潢配件

井道布置图

技术规格表

功能配置表

关于我们

物联网系统

以客户为尊

# 功能配置一览表

## List Of Configuration Specification

<div>S</div> 电梯变频控制 VVVF control	<div>S</div> 司机操作 Attendant's operation
<div>S</div> 矢量控制 Vector control	<div>S</div> 独立运行 Independent operation
<div>S</div> 全集选控制 Full collective control	<div>S</div> 点阵式层楼显示器 Dot-matrix floor display
<div>S</div> 检修运行 Inspection operation	<div>S</div> 运行方向的滚动显示 Scrolling display of moving direction
<div>S</div> 慢速自救运行 Slow self-rescue operation	<div>S</div> 层楼位置信号的自动修正 Automatic correction of floor position signal
<div>S</div> 时钟控制 Clock control	<div>S</div> 锁梯服务 Elevator locking service
<div>S</div> 保持开门时间的自动控制 Door opening time automatic control	<div>S</div> 门区外不能开门保护措施 Protective measures for guaranteeing no door opening outside the door area
<div>S</div> 本层厅外开门 Door opening outside for current layer	<div>S</div> 门光幕保护 Light curtain protection of door
<div>S</div> 关门按钮提前关门 Advanced door closing for door-close button	<div>S</div> 超载保护措施 Overload protection measures
<div>S</div> 开门按钮开门 Door opening for door-open button	<div>S</div> 轻载防捣乱功能 Anti-nuisance protection
<div>S</div> 重复开门 Repeated door opening;	<div>S</div> 逆向运行保护 Protection of reversed movement
<div>S</div> 换站停靠 Exchange stop	<div>S</div> 防打滑保护（运行时间限制器） Anti-slip protection (running time limiter)
<div>S</div> 错误指令取消 Cancellation of false command	<div>S</div> 防溜车保护 Anti car-slip protection
<div>S</div> 反向时自动消指令 Automatic call cancellation in reversed travelling	<div>S</div> 防终端越程保护 Terminal over-travel prevention
<div>S</div> 直接停靠 Direct parking	<div>S</div> 安全接触器继电器触点检测保护 Contact testing and protection of security contactor relay
<div>S</div> 满载直驶 Full-load bypass	<div>S</div> 调速器故障保护 Fault protection of speed governor
<div>S</div> 待梯时轿内照明、风扇自动断电 Automatic power-off of fan and illumination during waiting time	<div>S</div> 主控CPU WDT保护 Main controller CPU WDT protection
<div>S</div> 自动返基站 Automatic return to the main floor	<div>S</div> 火灾紧急返回运行 Emergency return in case of fire
<div>S</div> 液晶显示界面操作 Liquid crystal display operation	<div>S</div> 消防员操作 Firefighter's operation
<div>S</div> 模拟速度给定 Simulation speed preset	<div>S</div> 轿箱到站钟 Car arrival gong
<div>S</div> 数字量多段速度速度给定 Digital multi-stage speed preset	<div>S</div> 强迫关门 Forced door closing
<div>S</div> 故障历史记录 Fault history recording	<div>S</div> 应急照明 Emergency lighting
<div>S</div> 井道层楼数据自学习 Floor information self-studying	<div>S</div> 五方通话 5-ways intercom
<div>S</div> 服务层的任意设置 Free setting of service floor	<div>S</div> 警铃报警 Bell alarm
<div>S</div> 多种层楼显示字符的任意设定 Free setting of various floor indication characters	<div>S</div> 预负载补偿 Preload compensation



# 功能配置一览表

## List Of Configuration Specification

<div>S</div> 加速段截车响应 Acceleration-section stopping response	<div>O</div> 能量再生功能 Energy regeneration function
<div>S</div> 飞车禁止功能 Galloping prohibition function	<div>O</div> 无障碍功能 Accessibility
<div>S</div> 基站校验 Main floor verification	<div>O</div> 残疾人操纵箱操作 COP for the disabled
<div>S</div> 按钮粘连检查 Button adhesion inspection	<div>O</div> 大厅IC卡呼梯服务控制 IC card service in the hall
<div>S</div> 运行次数记录 Trips recording	<div>O</div> 停电应急平层 Leveling during power failure
<div>S</div> 运行时间记录 Running time recording	<div>O</div> 开门再平层 Door opening and then leveling
<div>S</div> 门锁异常自动开门 Automatic opening in the case of abnormal door lock	<div>O</div> VIP贵宾层服务 VIP floor service
<div>S</div> 轿厢意外移动保护装置 Car accidental movement protection device	<div>O</div> 远程维修中心监控 Remote inspection monitoring center
<div>S</div> 制动器制动力自动检测 Automatic detection of the braking force	<div>O</div> 开关控制群控梯服务层切换 Ervice floor elevator switching by switch control and group control
<div>S</div> 残障副操纵箱操作 Handicapped sub-control box operation	<div>O</div> 智立方™物联网系统 Intelligent Cube™, the internet of things
<div>O</div> 提前开门 Advanced door opening	
<div>O</div> 语音报站功能 Voice annunciator	
<div>O</div> 小区（或大楼）监控 Community (or building) monitoring	
<div>O</div> 并联运行 Parallel operation	
<div>O</div> 群控运行 Group-control operation	
<div>O</div> 大楼后备电源运行 Operation of standby power supply for building	
<div>O</div> 地震运行 Seismic operation	
<div>O</div> 上班高峰服务 Up-peak service	
<div>O</div> 下班高峰服务 Down-peak service	
<div>O</div> 分散待梯 Dispersed elevator waiting	
<div>O</div> 轿箱IC卡楼层服务控制 IC card floor service control in the car	
<div>O</div> 后门操纵箱操作 Operation of rear-door operating panel	
<div>O</div> 前后门独立控制 Independent control of front and rear doors	
<div>O</div> 厅外到站预报灯 Arrival hall lantern	
<div>O</div> 厅外到站钟 Arrival gong	

S

标配功能 Standard equipped functions

O

选配功能 Optional functions

功能特点
轿厢标选配
装潢配件
井道布置图
技术规格表
功能配置表
关于我们
物联网系统
以客户为尊



# 关于我们

## About Us

上海富士电梯成立于1992年，是中国电梯行业的先行者、开拓者、实践者与创新者之一。作为中国最早成立的民族电梯品牌之一，上海富士电梯拥有电梯制造、安装、改造、维修A级资质，是上海市高新技术企业，专注电梯服务近三十年，取得了不俗成绩，经典案例包括北京西客站、武汉中国中华城、曲靖雄业金都国际、印尼雅加达国际机场、老挝万象大酒店、浙江红船干部学院等，深受国内外广大用户的信赖。2018年1月，荣获2017年度全国政府采购电梯最佳服务品牌，2018年4月，出任中国电梯协会理事，2019年1月，荣获“2018年度全国政府采购最具竞争力品牌”、“2018年度全国政府采购旧楼加装电梯优秀品牌”，2019年10月，入围中国电梯制造商15强，名列第13位，2020年3月，荣获全国产品和服务质量诚信示范企业、全国质量检验稳定合格产品，连续多年被评为“上海名牌”。

Established in 1992, SHANGHAIFUJIELEVATOR is not only one of the pioneers, practitioners and innovators of Chinese elevator industry, but also one of the earliest runners of national elevator brands, owns A-class qualification in manufacturing, installation, modernization and maintenance, focusing on elevator services for nearly 30 years, made remarkable achievements during the past decades, Classic cases include Beijing West Railway Station, Wuhan City of China, Qujing Xiongye Jindu International, Jakarta International Airport, Vientiane Hotel, Zhejiang Redboat Executive Leadership, etc. won the award of BEST SERVICE Brand for National Government Procurement in January 2018, elected to the council unit of China Elevator Association In April 2018, in January 2019, won the Most Competitive Brand of National Government Elevator Procurement & the Excellent Brand elevator for existing buildings of National Government Elevator Procurement in 2018, In October 2019, shortlisted top 15 of China's elevator manufacturers, ranked 13th. In March 2020, won the National Product and Service Quality Integrity Benchmark Enterprise and National Stable and Standard Products Passed by CAQI, awarded Shanghai Famous Brand for consecutive years.

上海富士电梯是中国生活电梯新品类的开创者、代表者和引领者——专注、精致、考究的上海工业精神是上海富士电梯的灵魂和内心准则，在传承与创新中不断焕发生机；无论研发、设计、制造、销售、安装、维保乃至旧梯改造与新梯加装业务，上海富士电梯都以匠人为标准，苛求完美、精益求精，成就客户最佳服务；每一部电梯都是对于生活的诚意之作，每一部电梯都是倾注匠心的传承级品质之作。

SHANGHAIFUJIELEVATOR is the inaugurator of life elevator category, putting hearts into focused, refined, sophisticated of, which represents soul of Shanghai industrial spirit, in the inheritance and innovation in the continuous vitality. In research and development, design, manufacturing, sales, installation, maintenance, modernization and elevator adding for old buildings, SHANGHAIFUJIELEVATOR is on the basis of craftsmen, demanding perfection, keep improving, rendering customers the best service, make each elevator our sincerity to work for life and poured originality level of quality.

上海富士电梯生产基地位于上海自贸新片区，海陆空交通都非常便利，拥有垂直电梯和自动扶梯两大现代化的智能制造基地，全新的研发中心大楼将于2020年落成。依托上海国际大都市的全方位优势，上海富士电梯以先进的管理意识和经营方式，不断迭代创新，以品牌化运作构建竞争优势，以信息化平台提升管理效率，以服务化战略助推产业升级，致力于成为优秀的全球建筑交通解决方案服务商，奉献舒适、智能、安全、精致的城市生活友好之梯。

SHANGHAIFUJIELEVATOR Production Base locates in Shanghai Pilot Free Trade Zone, Shanghai with very convenient transportation of air, land and sea, with two modern intelligent manufacturing bases of elevator, escalator and moving walkway. The new building of Research and Development Center will be completed by the end of 2020. Relying on the comprehensive advantages of Shanghai international metropolis, SHANGHAIFUJIELEVATOR has built a competitive advantage by virtue of its advanced management awareness and management mode, continuous iterative innovation and branding operation. To improve the management efficiency of the information platform, to serve the strategy to promote the upgrading of the industry, we committed to becoming one of the most excellent provider for global construction transportation solutions, dedicate comfort, intelligence, safe, friendly elevator, escalator and moving walkway to life of urban city.





# 发展历程

## Company Milestone

1992年7月,上海富士电梯成立。公司注册资本15000万元。  
1993年1月,研制出中国第一支电梯空心导轨。  
1997年11月,首台电梯通过上海交通大学电梯检测中心整机性能测试。  
2001年6月,中标当年全国最大的订单——河南安阳行政小区203台高品质住宅生活电梯。  
2007年11月,被上海市经委评为2007年度“品牌产品”和“品牌企业”。  
2007年12月,被上海市质量协会认定为“上海市实施用户满意工程先进单位”。  
2008年4月-8月,载重1600kg、速度4m/s乘客电梯、载重10000kg载货电梯、载重10000kg汽车电梯、载重1600kg、速度2m/s观光电梯、载重2000kg、速度2m/s无机房乘客电梯、观光电梯、载货电梯通过上海交大电梯检测中心整机性能测试。  
2009年5月,取得高速电梯上梁、轿底、LED吊顶照明等8项专利。  
2009年12月,被上海市名牌产品推荐委员会评为“上海名牌”。  
2010年12月,被上海市科委认定为“上海市高新技术企业”。  
2013年5月,自动扶梯、自动人行道20000平方米新总装车间正式投产,年生产能力一万三千台。  
2013年12月,被上海市科委认定为“上海市科技小巨人(培育)企业”。  
2016年5月,亮相2016中国国际电梯展,率先发布第一代生活电梯,以主题工匠日和主题生活日两大特色活动轰动展会,获得热烈反响。  
2017年3月,西北营销服务中心成立。  
2018年1月,荣获“全国政府采购电梯最佳服务品牌”。  
2018年4月,当选中国电梯协会理事单位。  
2018年5月,在2018中国国际电梯展独家发布全新一代生活电梯、新一代别墅电梯、生活·IEE\*加装电梯和青年志愿者服务公益形象大使——安安。  
2018年7月,西南营销服务中心成立。  
2018年9月,被评选为上海市奉贤区企业文化建设示范点单位。  
2018年10月,亮相拉脱维亚上交会。  
2019年1月,荣获“2018年度全国政府采购最具竞争力品牌”、“2018年度全国政府采购旧楼加装电梯优秀品牌”。  
2019年4月,精彩亮相廊坊国际电梯展。  
2019年5月,荣登2019中国品牌价值机械制造排行榜TOP50。  
2019年7月,荣获信用中国·(行业)最具竞争力十大诚信品牌。  
2019年9月,亮相土耳其上交会。  
2019年9月,荣获全国质量信得过产品、全国质量诚信标杆企业。  
2019年10月,入围中国电梯制造商15强,名列第13位。  
2019年11月,浙江红船干部学院加装电梯荣获中国电梯2016-2018年经典电梯工程项目奖。  
2020年3月,荣获全国产品和服务质量诚信示范企业、全国质量检验稳定合格产品。

In July 1992, SHANGHAI FUJI ELEVATOR was founded, the registered capital was 150 million yuan.  
In January 1993, successfully created the first hollow guide rail in China.  
In November 1997, the first elevator passed the complete machine function test by the elevator testing center of Shanghai Jiao Tong University.  
In June 1992, successfully bid the biggest order in China to provide 203 high-quality residential life elevators to Anyang city, Henan province.  
In November 2007, evaluated as 2007 Brand Product and Brand Enterprise by Shanghai Economics Committee.  
In December 2007, recognized as Shanghai Advanced Unit of Customer Satisfaction Project by Shanghai Quality Association.  
From April to August in 2008, 1600kg with 4m/s passenger elevator, 10000kg cargo elevator, 1600kg car elevator, 1600kg with 2m/s observation elevator, 2000kg with 2m/s machine room less passenger elevator, observation elevator and cargo elevator passed the whole machine performance test by the elevator testing center of Shanghai Jiao Tong University.  
In May 2009, achieved 8 patents including high-speed elevator cross bar, car platform, LED ceiling lighting.  
In December 2009, evaluated as Shanghai Brand Produce Recommendation Committee.  
In December 2010, assessed as Shanghai Hi-tech Enterprise by Shanghai Economics Committee.  
In May 2013, the new assembly factory of escalator, Walkway Series with 20 thousand square meters was put into production and the annual producing ability was 13 thousand.  
In December 2013, assessed as Shanghai Small Giant Enterprise of technology by Shanghai Economics Committee.  
In May 2016, made a stage pose at China International Elevator Exhibition 2016, with the theme craftsmen and city life, received enthusiastic response.  
In March 2017, the Northwest Marketing Service Center was established.  
In January 2018, won the Best Service Brand of National Government Elevator Procurement.  
In April 2018, elected to the council unit of China Elevator Association.  
In May 2018, the new life elevator, new villa elevator, IEE\* elevator for existing buildings and ANAN, the ambassador of youth volunteer services, exclusively released at the China International Elevator Exhibition 2018.  
In July 2018, the Southwest Marketing Service Center was established.  
In September 2018, it was elected as the demonstration unit of corporate culture of Fengxian District.  
In October 2018, made a stage pose at Latvia's first Shanghai International Trade Fair.  
In January 2019, won the Most Competitive Brand of National Government Elevator Procurement & the Excellent Brand elevator for existing buildings of National Government Elevator Procurement in 2018.  
In April 2019, made a stage pose at Langfang International Elevator Exhibition 2019.  
In May 2019, Ranked TOP50 in China brand value machinery manufacturing list 2019.  
In July 2019, won the top 10 most competitive credit brands in China.  
In September 2019, made a stage pose at Turkey's Shanghai International Trade Fair.  
In September 2019, won the National quality integrity benchmark enterprises & National quality trust products.  
In October 2019, shortlisted top 15 of China's elevator manufacturers, ranked 13th.  
In November 2019, Zhejiang Redboat Executive Leadership Academy won the Classic Elevator Project of China Elevator.  
In March 2020, won the National Product and Service Quality Integrity Benchmark Enterprise and National Stable and Standard Products Passed by CAQI.

功能特点

轿厢标配

装潢配件

井道布置图

技术规格表

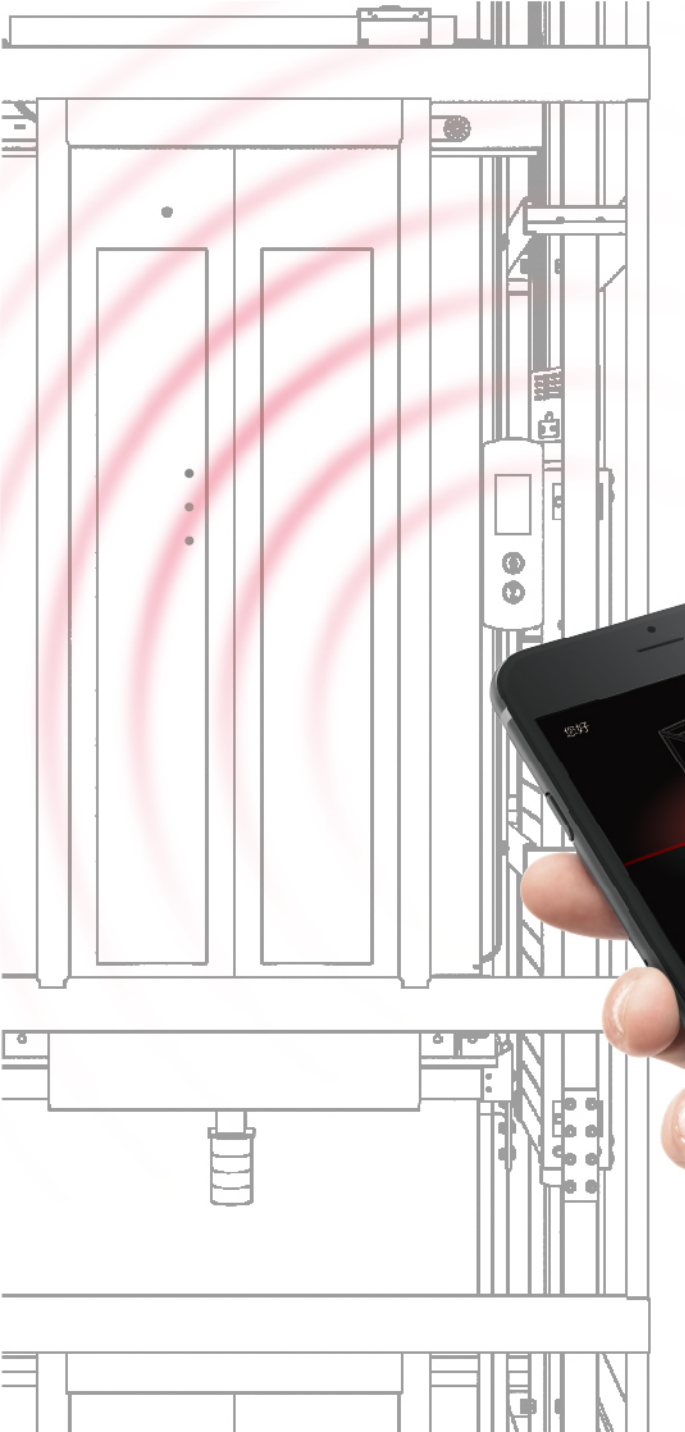
功能配置表

关于我们

物联网系统

以客户为尊





# 智立方™ 电梯物联网系统

## Intelligent Cube™, The IoT System Realtime



### 动态监测 及时服务

Monitoring, just in time services

#### 智慧云

Smart Cloud

对电梯全生命周期的设备运行状态进行采集、预处理并传输至云平台。并可实现高网络安全性的保障下运行应用程序和流媒体，处理应急通话。

The full-life-cycle equipment operation conditions of elevators are collected, pretreated and transmitted to the cloud platform. The high network safety guarantees that it can run applications and streaming media and handle emergency calls.

#### 智平台

Smart Platform

采用大数据分析和人工智能技术，对电梯的各项信息进行分析，能够为维保工作进行预警，在出现问题或使用寿命到期前提醒维保。

It adopts big data analysis and artificial intelligence technologies to analyze all elevator information so it can give an early warning for maintenance work and remind maintenance personnel of maintenance work when problems occur or the service life has expired.

#### 智互联

Smart Internet

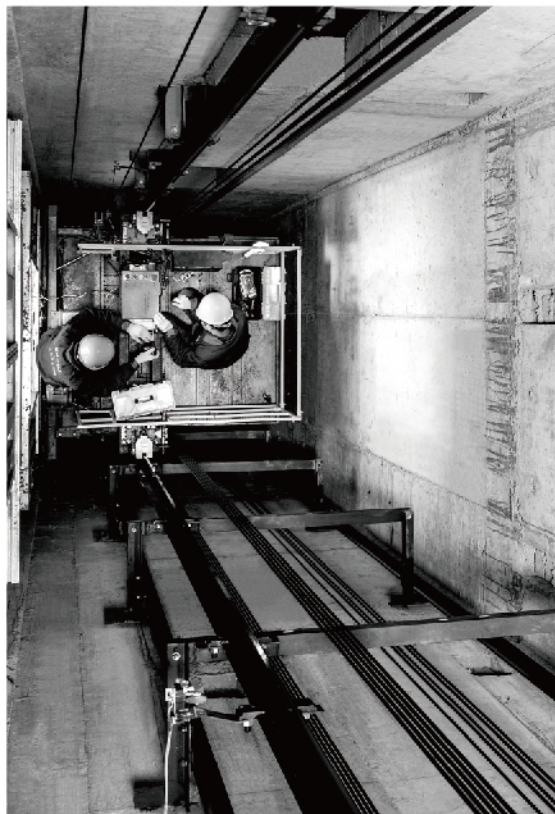
上海富士电梯智立方物联网系统信息能够接入各类终端设备，为电梯的使用和维保提供更多便利。

Intelligent cube, the various terminal devices can access the IoT system information to facilitate the use and maintenance of elevators much more.

 选配  
 Optional

# 以客户为尊，服务即生命

## Put Clients First, Service Is Life



### 五星级服务团队

#### Five-star Service Team

上海富士电梯五星级服务团队，不仅拥有出众的技术能力，还拥有高水平的服务素养，为用户带去高效而舒心的卓越体验。

The five-star service team of SHANGHAI FUJI ELEVATOR has outstanding technical skills and high-level service ability and provides efficient comfortable excellent experiences for users.

### 覆盖全国的售后服务网络

#### An after-sales service network Covering the whole country

上海富士电梯在全国各主要城市均设有分支机构，为当地客户做出第一时间的响应及快捷的备件供应。

SHANGHAI FUJI ELEVATOR has set up branches in all major cities in China to respond in the first place and quickly provide spare parts for local customers.



功能特点

轿厢标选配

装潢配件

井道布置图

技术规格表

功能配置表

关于我们

物联网系统

以客户为尊



## 传承级品质电梯

INHERITANCE-QUALITY ELEVATOR

上海富士电梯有限公司  
SHANGHAI FUJI ELEVATOR CO., LTD.

上海市奉贤区大叶公路7505-7515号  
No. 7505-7515 Daye Road, Fengxian District, Shanghai, China

总机 Switchboard: 021-57559666  
传真 Fax: 021-57559735 / 57559739  
E-mail: shfuji@sh-fuji.cn  
服务电话 Tel: 400-820-6026 / 800-820-6026  
www.sh-fuji.cn



官方微信

本样册仅供参考, 本公司保留随时更新产品设计与规格的权利。  
样册内产品信息说明不构成任何担保或承诺, 不视作产品或服务合同条款。  
The publication is for reference only and SHANGHAI FUJI ELEVATOR reserves the right at any time to alter the product design and specifications. No product introduction the publication contains shall be construed as a warranty or condition, so as any terms of product or service contracts.



上海名牌  
Shanghai Brand



上海高新技术企业  
Shanghai Hi-Tech Enterprise



ISO 9001



ISO 14001



GB/T 28001



采用国际  
标准产品  
Adoption of International  
standard products

版本号: 2004VIP2-EL-84